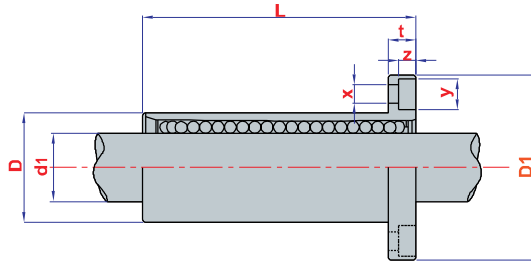


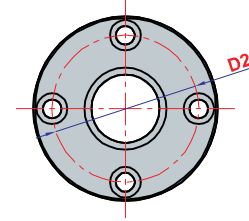
## YUVARLAK UZUN



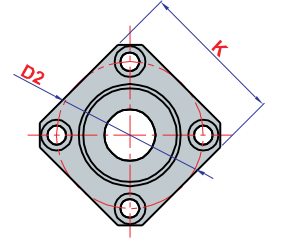
## KARE UZUN



## LMEF LUU



## LMEK LUU

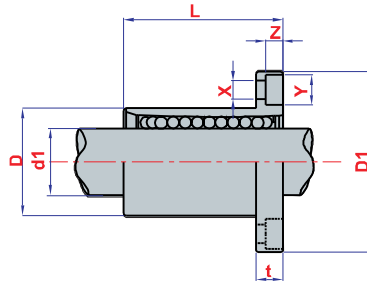


KOD	MODEL	Ölçüleri (mm)										Yükleme Kapasitesi	
		d1	D	L	D1	K	t	D2	x	y	z	Dinamik	Statik
4.009.004.16.01	LMEF 16 LUU	16	26	68	46	35	6	36	4.5	7.5	4.1	912	1.780
4.009.004.20.01	LMEF 20 LUU	20	32	80	54	42	8	43	5.5	9	5.1	1.370	2.740
4.009.004.25.01	LMEF 25 LUU	25	40	112	62	50	8	51	5.5	9	5.1	1.570	3.140
4.009.004.30.01	LMEF 30 LUU	30	47	123	76	60	10	62	6.6	11	6.1	2.500	5.490
4.009.004.40.01	LMEF 40 LUU	40	62	151	98	75	13	80	9	14	8.1	3.430	8.040
4.009.006.16.01	LMEK 16 LUU	16	26	68	46	35	6	36	4.5	7.5	4.1	912	1.780
4.009.006.20.01	LMEK 20 LUU	20	32	80	54	42	8	43	5.5	9	5.1	1.370	2.740
4.009.006.25.01	LMEK 25 LUU	25	40	112	62	50	8	51	5.5	9	5.1	1.570	3.140
4.009.006.30.01	LMEK 30 LUU	30	47	123	76	60	10	62	6.6	11	6.1	2.500	5.490
4.009.006.40.01	LMEK 40 LUU	40	62	151	98	75	13	80	9	14	8.1	3.430	8.040

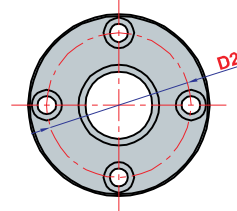
## YUVARLAK KISA



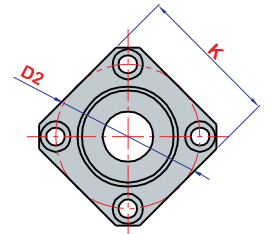
## KARE KISA



## LMEF UU



## LMEK UU



KOD	MODEL	Ölçüleri (mm)										Yükleme Kapasitesi	
		d1	D	L	D1	K	t	D2	x	y	z	Dinamik	Statik
4.009.003.12.01	LMEF 12 UU	12	22	32	42	32	6	32	4.5	8	4	500	700
4.009.003.16.01	LMEF 16 UU	16	26	36	46	35	6	36	4.5	8	4	570	890
4.009.003.20.01	LMEF 20 UU	20	32	45	54	42	8	43	5.5	9.5	4	860	1370
4.009.003.25.01	LMEF 25 UU	25	40	58	62	50	8	51	5.5	9.5	4	980	1560
4.009.003.30.01	LMEF 30 UU	30	47	68	76	60	10	62	6.6	11	5	1560	2740
4.009.003.40.01	LMEF 40 UU	40	62	80	98	75	13	80	9	14	6	2150	4010
4.009.005.16.01	LMEK 16 UU	16	26	36	46	35	6	36	4.5	8	4	570	890
4.009.005.20.01	LMEK 20 UU	20	32	45	54	42	8	43	5.5	9.5	4	860	1370
4.009.005.25.01	LMEK 25 UU	25	40	58	62	50	8	51	5.5	9.5	4	980	1560
4.009.005.30.01	LMEK 30 UU	30	47	68	76	60	10	62	6.6	11	5	1560	2740
4.009.005.40.01	LMEK 40 UU	40	62	80	98	75	13	80	9	14	6	2150	4010

## Tercih Edildiği Yerler

Kare ve yuvarlak olmak üzere iki farklı bağlantı seçeneği vardır. Ayrıca her ikisinin de uzun ve kısa tipi bulunmaktadır. Monoblok çelik gövdesiyle daha hassas tasarımlar için tercih edilmektedir.