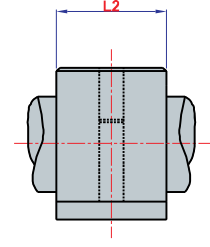
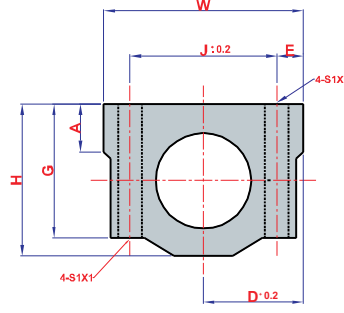
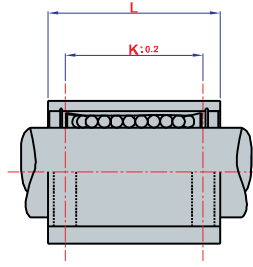
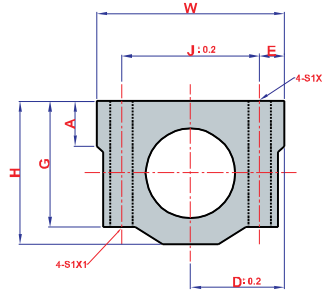


SCE-VUU



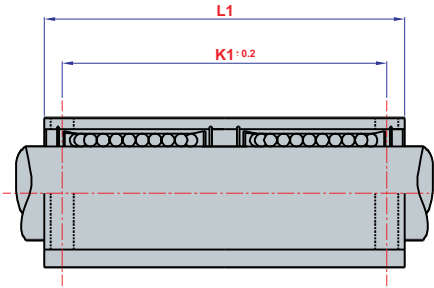
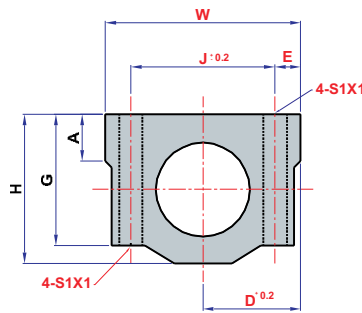
KOD	MODEL	Ölçüleri (mm)										Temel Yük Değerlendirmesi		Ağırlık (g)	SCE...SUU	
		h	D	W	H	G	A	J	E	S1X1	S2	Dinamik	Statik		K2	
4.009.007.16.01	SCE16 VUU	19	25	50	38.5	32.5	9	36	7	M5x12	4.3	770	1170	180	22.3	
4.009.007.20.01	SCE20 VUU	21	27	54	41	35	11	40	7	M6x12	5.2	860	1370	245	28.3	
4.009.007.25.01	SCE25 VUU	26	38	76	51.5	41	12	54	11	M8x18	6.8	980	1560	550	40.4	
4.009.007.30.01	SCE30 VUU	30	39	78	59.5	49	15	58	10	M8x18	6.8	1560	2740	760	48.4	
4.009.007.40.01	SCE40 VUU	40	51	102	78	62	20	80	11	M10x25	8.6	2150	4010	1.700	56.4	

SCE-UU



KOD	MODEL	Ölçüleri (mm)										Yükleme Kapasitesi		Ağırlık (g)	SCE...UU	
		h	D	W	H	G	A	J	E	S1X1	S2	Dinamik	Statik		K	L
4.009.008.16.01	SCE16 UU	19	25	50	38.5	32.5	9	36	7	M5x12	4.3	774	1180	200	34	44
4.009.008.20.01	SCE20 UU	21	27	54	41	35	11	40	7	M6x12	5.2	882	1370	255	40	53
4.009.008.25.01	SCE25 UU	26	38	76	51.5	41	12	54	11	M8x18	7	980	1570	600	50	67
4.009.008.30.01	SCE30 UU	30	39	78	59.5	49	15	58	10	M8x18	7	1570	2740	735	58	76
4.009.008.40.01	SCE40 UU	40	51	102	78	62	20	80	11	M10x25	8.7	2160	4020	1.590	60	90

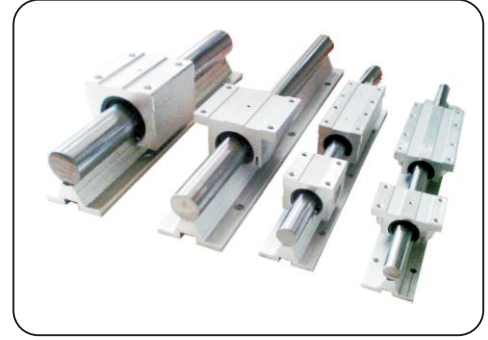
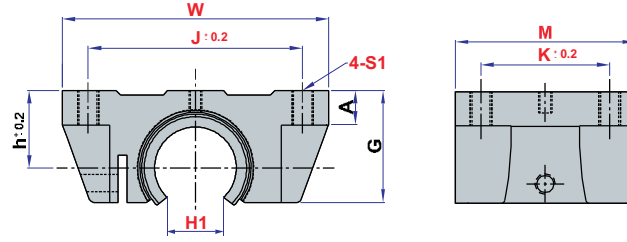
SCE-LUU



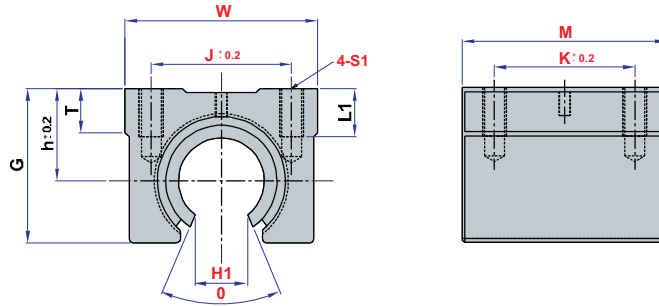
KOD	MODEL	Ölçüleri (mm)										Yükleme Kapasitesi		Ağırlık (g)	SCE...LUU	
		h	D	W	H	G	A	J	E	S1X1	S2	Dinamik	Statik		K1	L1
4.009.009.16.01	SCE16 LUU	19	25	50	38.5	32.5	9	36	7	M5x12	4.3	774	1.180	376	79	89
4.009.009.20.01	SCE20 LUU	21	27	54	41	35	11	40	7	M6x12	5.2	882	1.370	476	90	100
4.009.009.25.01	SCE25 LUU	26	38	76	51.5	41	12	54	11	M8x18	7	980	1.570	1.115	119	136
4.009.009.30.01	SCE30 LUU	30	39	78	59.5	49	15	58	10	M8x18	7	1.570	2.740	1.375	132	154
4.009.009.40.01	SCE40 LUU	40	51	102	78	62	20	80	11	M10x25	8.7	2.160	4.020	3.200	150	180

Tercih Edildiği Yerler

Alüminyum gövdeli kapalı tip lineer rulmanlar deliksiz indüksiyonlu miller ile kullanılmalıdır. Üç farklı tipte kullanıma sunulmaktadır. Uzun tipler çift lineer rulmanlı olarak kullanılmaktadır.

TBR

KOD	MODEL	Ölçüleri (mm)									Yükleme Kapasitesi		Ağırlık (g)
		W	G	A	M	S1	J	K	h	H1	Dinamik	Statik	
4.009.013.16.01	TBR 16	62	26	8	42	M5	50	30	18	11	392	490	0.18
4.009.013.20.01	TBR 20	68	31	10	51	M6	54	34	21	12.5	784	1176	0.30
4.009.013.25.01	TBR 25	82	41	10	65	M8	65	50	28	13	1568	2352	0.60
4.009.013.30.01	TBR 30	91	48	12	75	M8	75	60	33.5	15.5	1764	2940	0.90

SBR

KOD	MODEL	Ölçüleri (mm)									Yükleme Kapasitesi		Ağırlık (g)
		W	G	L1	M	S1	J	K	h	H1	Dinamik	Statik	
4.009.012.12.01	SBR 12	40	27,6	10	39	M5	28	26	17	7.5	510	784	100
4.009.012.16.01	SBR 16	45	33	10	45	M5	32	30	20	11	774	1180	150
4.009.012.20.01	SBR 20	48	39	12	50	M6	35	35	23	12.5	882	1370	200
4.009.012.25.01	SBR 25	60	47	13	65	M6	40	40	27	13	980	1570	450
4.009.012.30.01	SBR 30	70	56	16	70	M8	50	50	33	15.5	1570	2740	630
4.009.012.40.01	SBR 40	90	72	20	90	M10	65	65	42	21	2160	4020	1330