

LCQ50

Pneumatic retractable locating pin unit with hand lever, single rod



L	C	Q	5	0	0	5	0	U	1	2	R
1	2	3	4		5	6		7			

1 Series	2 Version	3 Size
-----------------	------------------	---------------

LC = Retractable locating pin unit

Q = Pneumatic with hand lever, single rod

50 = Ø 50 mm

4 Strokes	5 Sensor	6 Rod's inner Ø
------------------	-----------------	------------------------

025 = 25 mm
050 = 50 mm

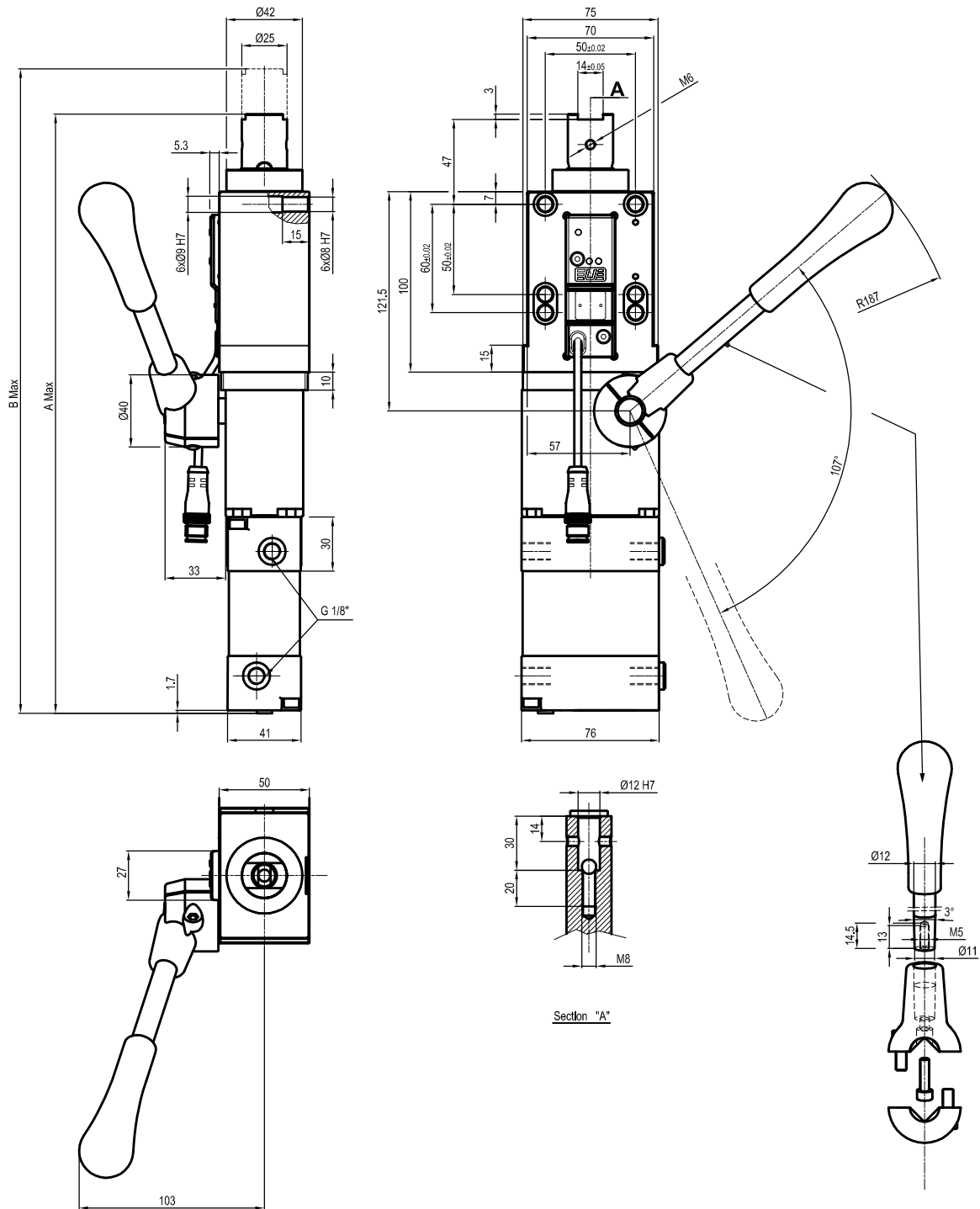
U = Electronic sensor

12 = Ø 12 mm
20 = Ø 20 mm

7 Rod scraper

R = Metallic rod scraper

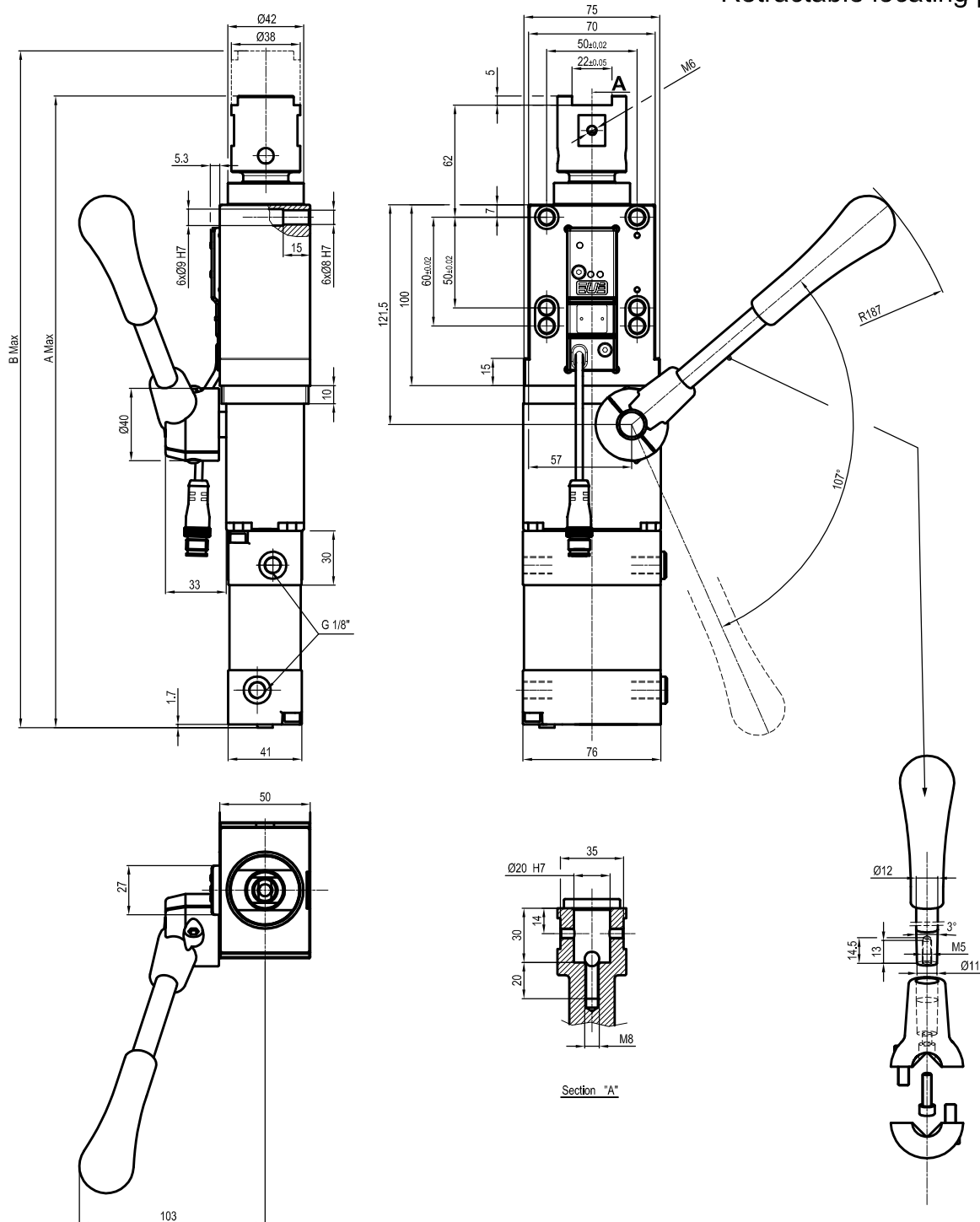
Retractable locating pin unit



ROD'S INNER Ø12				
CYLINDER Ø	STROKE	WEIGHT	A	B
CYLINDER Ø50	25 mm	3,1 Kg	335 mm	360 mm
CYLINDER Ø50	50 mm	3,2 Kg	360 mm	410 mm

Min./max. operating pressure: **0,4 / 0,6 MPa**
 Operating temperature: **5° ± 45° C**
 Electronic sensor with M12
 Supply voltage: 10+30 Vdc
 IP code: **IP 65**
 Pneumatic ports on both sides

Retractable locating pin unit



ROD'S INNER Ø20				
CYLINDER Ø	STROKE	WEIGHT	A	B
CYLINDER Ø50	25 mm	3,1 Kg	350 mm	375 mm
CYLINDER Ø50	50 mm	3,2 Kg	375 mm	425 mm

Min./max. operating pressure: **0,4 / 0,6 MPa**
 Operating temperature: **5° + 45° C**
 Electronic sensor with M12
 Supply voltage: 10+30 Vdc
 IP code: **IP 65**
 Pneumatic ports on both sides