

LCA63

Pneumatic retractable locating pin unit,
double orientable rod



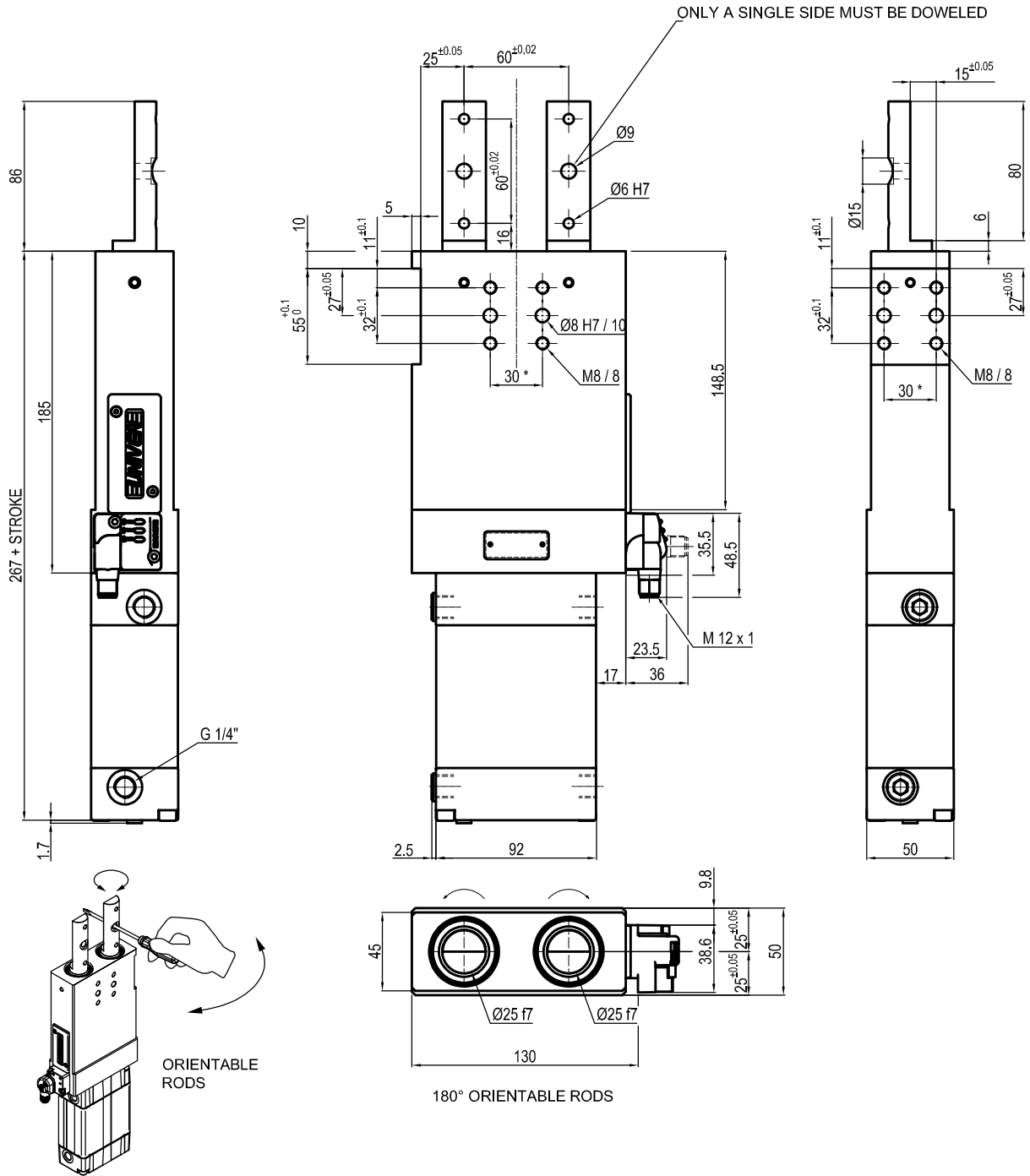
L	C	A	6	3	0	4	0	A	A	R
1	2	3	4		5	6	7			

1 Series	2 Version	3 Size
LC = Retractable locating pin unit	A = Pneumatic, double orientable rod	63 = Ø 63 mm

4 Strokes	5 Sensor	6 Rod end style
<p>015 = 15 mm</p> <p>025 = 25 mm</p> <p>040 = 40 mm</p> <p>050 = 50 mm</p> <p>060 = 60 mm</p> <p>075* = 75 mm</p> <p>100* = 100 mm</p> <p>110* = 110 mm</p> <p>* = Special strokes</p>	<p>D = Pneumatic sensor with double air supply</p> <p>N = No sensor (with protection plate)</p> <p>A = Electronic sensor with M12 swivel connector (DF-U)</p> <p>E = Electronic sensor with M12 swivel connector (DF-U) (only for special strokes: 075 - 100 - 110)</p>	<p>A = Rod for off-set pins</p>

7 Option
R = Metallic rod scraper

UNIVERSAL Pneumatic retractable locating pin unit with double rod



Bore Ø	Pull force at 0.5 MPa	Push force at 0.5 MPa	Max. torque 20 Nm	Max. deflection moment 20 Nm	Weight
63 mm	1430 N	15300 N	0.1 mm	0.07 mm	5.8 Kg

X = 100 mm

Min./max. operating pressure: **0,4 / 0,6 MPa**

Operating temperature: **5° + 45° C**

Strokes in mm.: **15 - 25 - 40 - 50 - 60**

Electronic sensor with M12 swivel connector that can be orientated at 0° or 90°

Supply voltage: 10÷30 Vdc

IP code: **IP 65**

Pneumatic ports on both sides

* : TOLERANCE BETWEEN DOWEL HOLES ± 0.02, BETWEEN SCREW HOLES ± 0.1

Subject to technical modification without notice.

LCA63

Pneumatic retractable locating pin unit,
double rod



L	C	A	6	3	0	4	0	E	A	R
1	2	3	4		5	6	7			

1 Series	2 Version	3 Size
-----------------	------------------	---------------

LC = Retractable locating pin unit

A = Pneumatic, double rod

63 = Ø 63 mm

4 Strokes	5 Sensor	6 Rod end style
------------------	-----------------	------------------------

015 = 15 mm

025 = 25 mm

040 = 40 mm

050 = 50 mm

060 = 60 mm

075* = 75 mm

100* = 100 mm

110* = 110 mm

D = Pneumatic sensor with double air supply

N = No sensor (with protection plate)

E = Electronic sensor with M12 swivel connector

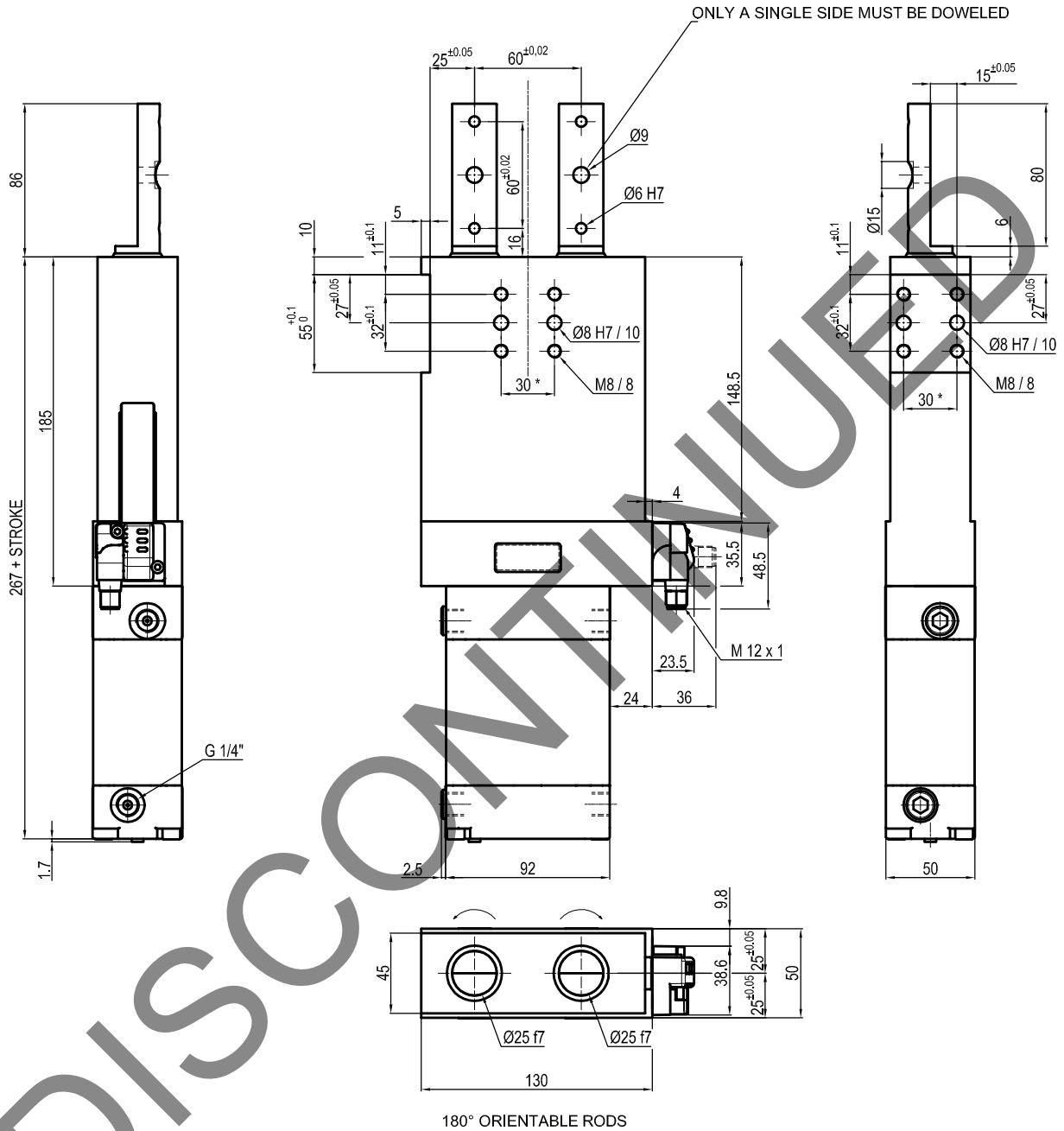
A = Rod for off-set pins

* = Electronic sensor for special strokes: DF-U

7 Rod scraper

R = Metallic rod scraper

UNIVERSAL Pneumatic retractable locating pin unit with double rod



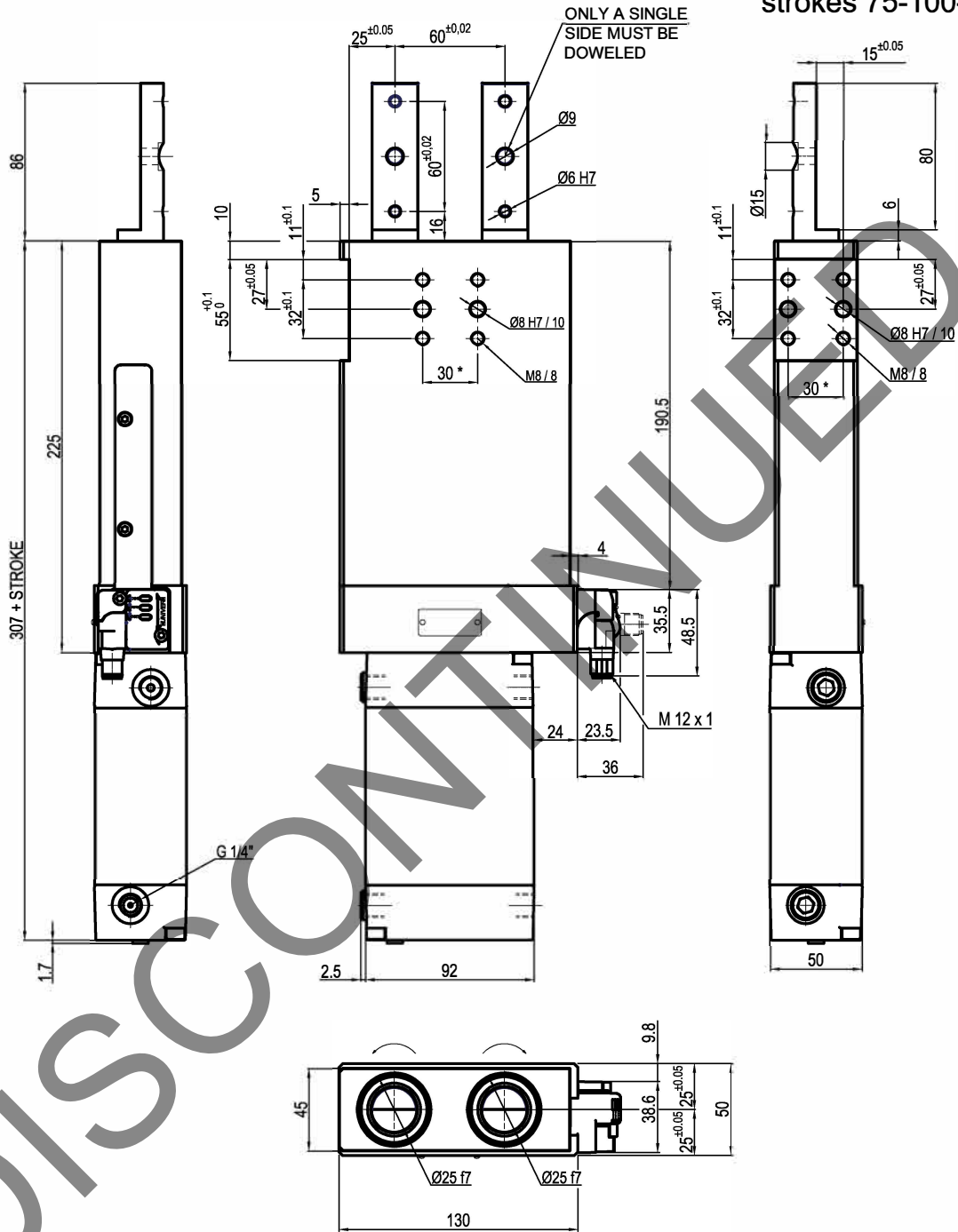
Bore Ø	Max. torque	Max. deflection moment	Weight
63 mm	20 Nm ±0.1°	20 Nm ±0.03°	5.8 Kg

Min./max. operating pressure: **0,4 / 0,6 MPa**
 Operating temperature: **5° + 45° C**
 Strokes in mm.: **15 - 25 - 40 - 50 - 60**
 Electronic sensor with M12 swivel connector that can be orientated at 0° or 90°
 Supply voltage: 10÷30 Vdc
 IP code: **IP 65**
 Pneumatic ports on both sides

* : TOLERANCE BETWEEN DOWEL HOLES ± 0.02, TO SCREW HOLES ± 0.1

Subject to technical modification without notice.

UNIVERSAL Pneumatic retractable locating pin unit with double rod strokes 75-100-110



Bore Ø	Max. torque	Max. deflection moment	Weight
63 mm	20 Nm ±0.1°	20 Nm ±0.03°	5.8 Kg

Min./max. operating pressure: **0,4 / 0,6 MPa**
 Operating temperature: **5° + 45° C**
 Strokes in mm.: **75 - 100 - 110**
 Electronic sensor with M12 swivel connector that can be orientated at 0° or 90°
 Supply voltage: 10÷30 Vdc
 IP code: **IP 65**
 Pneumatic ports on both sides

* : TOLERANCE BETWEEN DOWEL HOLES ± 0.02, TO SCREW HOLES ± 0.1

Subject to technical modification without notice.