

# LCP63

Pneumatic retractable locating pin unit, single rod



|   |   |   |   |   |   |   |   |   |   |   |   |
|---|---|---|---|---|---|---|---|---|---|---|---|
| L | C | P | 6 | 3 | 0 | 5 | 0 | A | A | E | R |
| 1 | 2 | 3 | 4 |   | 5 | 6 | 7 | 8 |   |   |   |

|                 |                  |               |
|-----------------|------------------|---------------|
| <b>1 Series</b> | <b>2 Version</b> | <b>3 Size</b> |
|-----------------|------------------|---------------|

LC = Retractable locating pin unit

P = Pneumatic-standard, single rod

63 = Ø 63 mm

|                  |                 |                        |
|------------------|-----------------|------------------------|
| <b>4 Strokes</b> | <b>5 Sensor</b> | <b>6 Rod end style</b> |
|------------------|-----------------|------------------------|

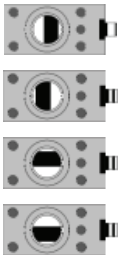
- 015 = 15 mm
- 025 = 25 mm
- 040 = 40 mm
- 050 = 50 mm
- 060 = 60 mm

- N = No sensor (with protection plate)
- A = Electronic sensor with M12 swivel connector DF-U

- A = Rod for off-set pins
- B = Rod with profiled end
- C = Rod with cross-profiled end inner Ø 16 mm
- D = Rod for off-set pins with oversized dowel holes
- E = Rod with cross-profiled end inner Ø 10 mm
- F = Rod for side mounting
- H = Rod with flat end, inner Ø 10 mm
- I = Rod with flat end, inner Ø 12 mm
- L = Rod with 12 mm hole compatible with CNOMO LCG
- M = Rod with 20 mm hole compatible with CNOMO LCG

|                          |                 |
|--------------------------|-----------------|
| <b>7 Rod orientation</b> | <b>8 Option</b> |
|--------------------------|-----------------|

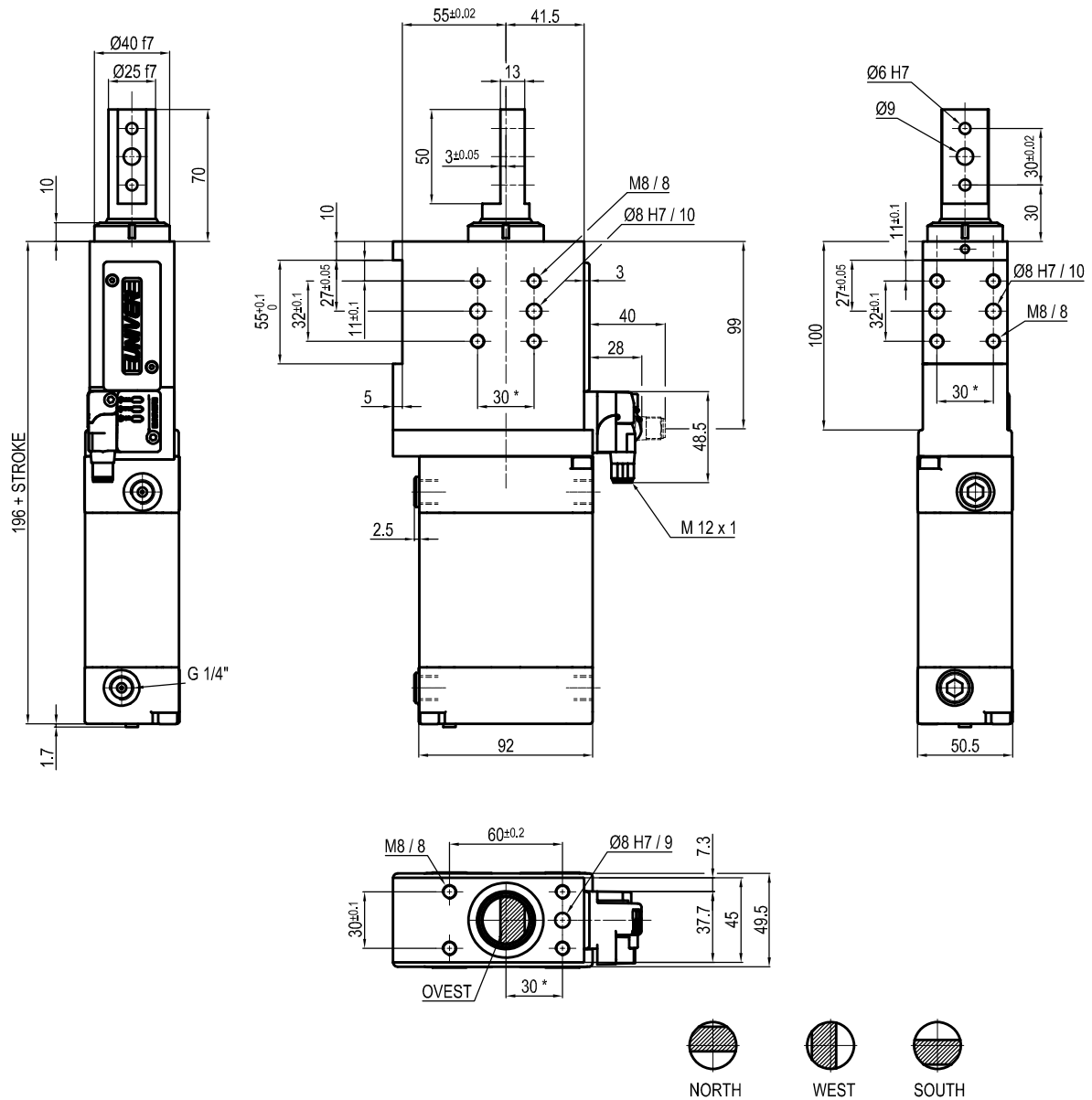
- E = East, standard
- O = West
- N = North
- S = South



- R = Metallic rod scraper
- B = double internal guide and metallic rod scraper

Only with A and D rod end styles

## UNIVERSAL Pneumatic retractable locating pin unit



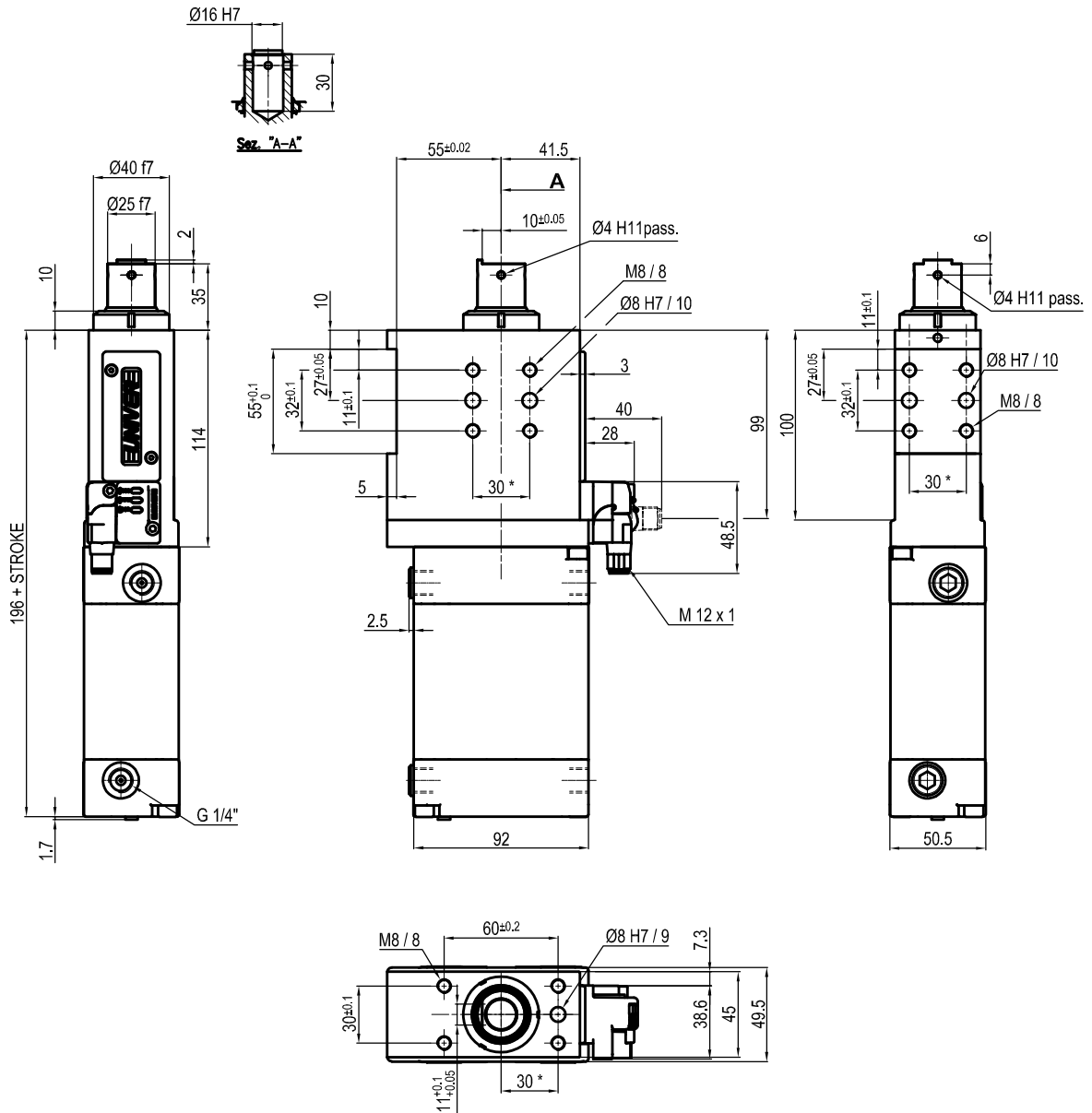
| Bore $\text{Ø}$ | Max. pull force | Max. push force | Max. torque           | Max. deflection moment  | Weight |
|-----------------|-----------------|-----------------|-----------------------|-------------------------|--------|
| 63 mm           | 860 N           | 960 N           | 6 Nm $\pm 0.06^\circ$ | 7.5 Nm $\pm 0.03^\circ$ | 3.4 Kg |

Min./max. operating pressure: **0,4 / 0,6 MPa**  
 Operating temperature: **5° + 45° C**  
 Strokes in mm.: **15 - 25 - 40 - 50 - 60**  
 Electronic sensor with M12 swivel connector that can be orientated at 0° or 90°  
 Supply voltage: 10+30 Vdc  
 IP code: **IP 65**  
 Pneumatic ports on both sides

\* : TOLERANCE BETWEEN DOWEL HOLES  $\pm 0.02$ , BETWEEN SCREW HOLES  $\pm 0.1$

Subject to technical modification without notice.

## UNIVERSAL Pneumatic retractable locating pin unit



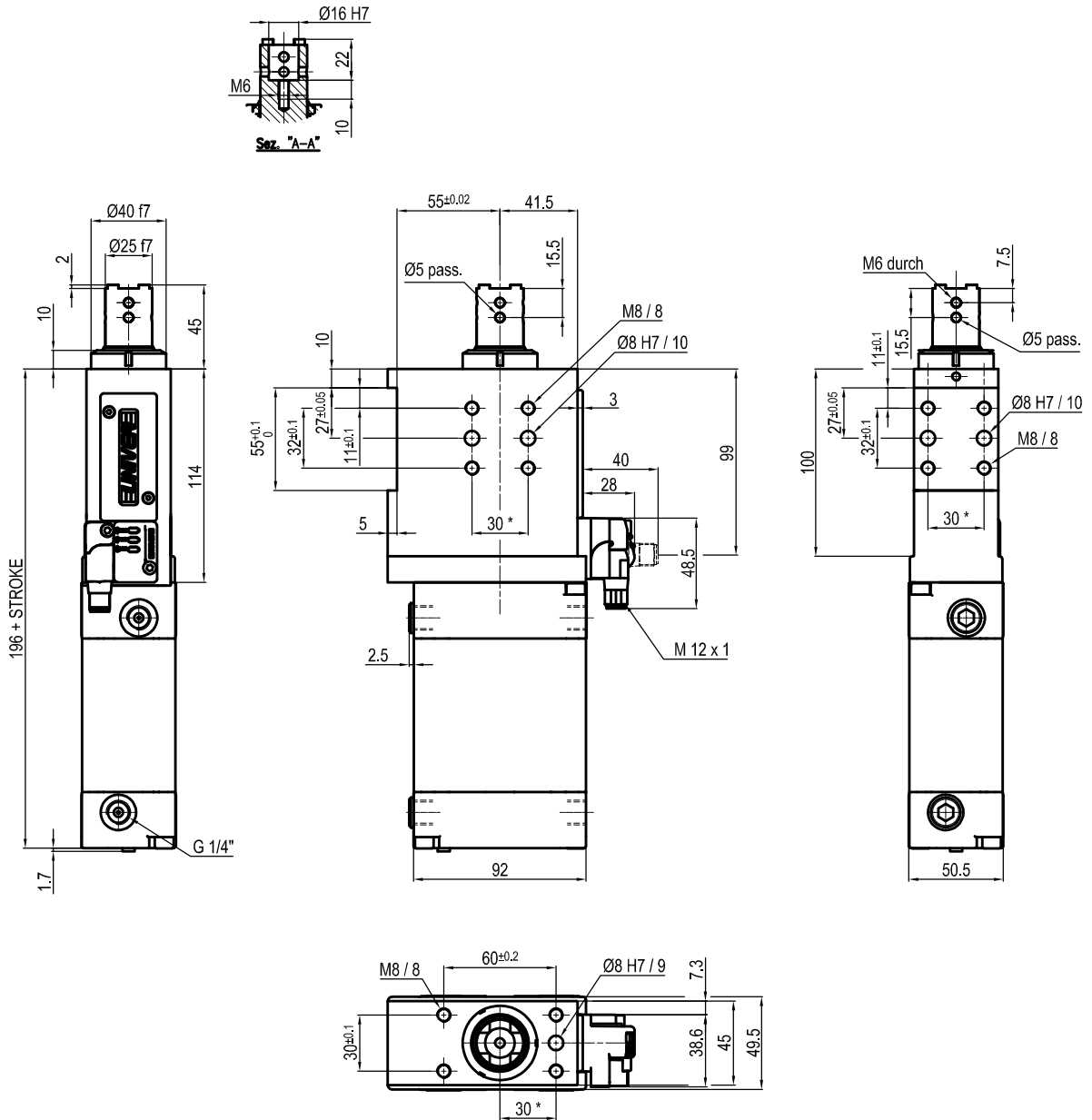
| Bore Ø | Max. pull force<br>0.5 MPa | Max. push force<br>0.5 MPa | Max. torque    | Max. deflection moment | Weight |
|--------|----------------------------|----------------------------|----------------|------------------------|--------|
| 63 mm  | 860 N                      | 960 N                      | 6 Nm<br>±0.06° | 7.5 Nm<br>±0.03°       | 3.4 Kg |

Min./max. operating pressure: **0,4 / 0,6 MPa**  
 Operating temperature: **5° + 45° C**  
 Strokes in mm.: **15 - 25 - 40 - 50 - 60**  
 Electronic sensor with M12 swivel connector that can be orientated at 0° or 90°  
 Supply voltage: 10+30 Vdc  
 IP code: **IP 65**  
 Pneumatic ports on both sides

\* : TOLERANCE BETWEEN DOWEL HOLES ± 0.02, BETWEEN SCREW HOLES ± 0.1

Subject to technical modification without notice.

## UNIVERSAL Pneumatic retractable locating pin unit



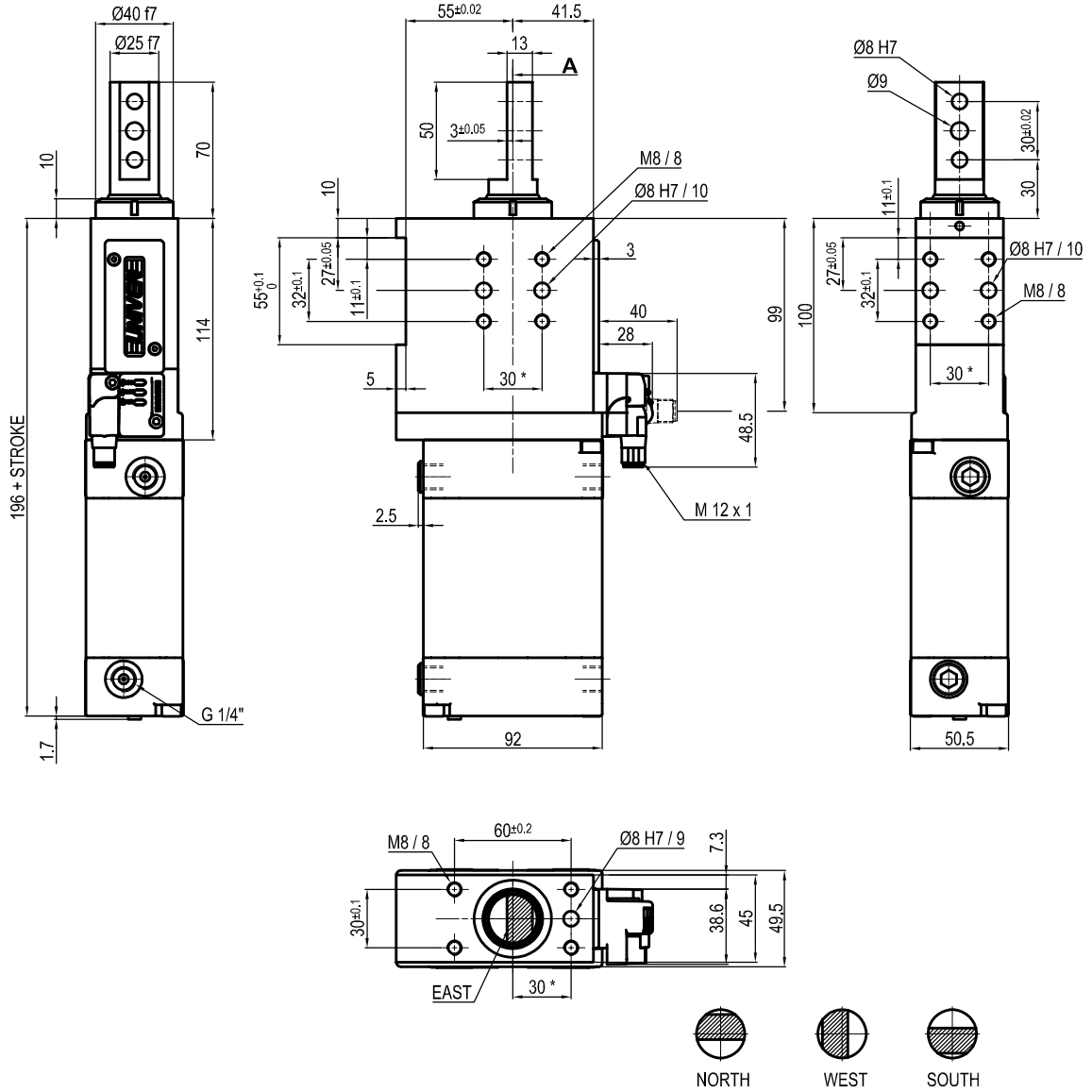
| Bore Ø | Max. pull force<br>0.5 MPa | Max. push force<br>0.5 MPa | Max. torque    | Max. deflection moment | Weight |
|--------|----------------------------|----------------------------|----------------|------------------------|--------|
| 63 mm  | 860 N                      | 960 N                      | 6 Nm<br>±0.06° | 7.5 Nm<br>±0.03°       | 3.4 Kg |

Min./max. operating pressure: **0,4 / 0,6 MPa**  
 Operating temperature: **5° + 45° C**  
 Strokes in mm.: **15 - 25 - 40 - 50 - 60**  
 Electronic sensor with M12 swivel connector that can be orientated at 0° or 90°  
 Supply voltage: 10+30 Vdc  
 IP code: **IP 65**  
 Pneumatic ports on both sides

\* : TOLERANCE BETWEEN DOWEL HOLES ± 0.02, BETWEEN SCREW HOLES ± 0.1

Subject to technical modification without notice.

## UNIVERSAL Pneumatic retractable locating pin unit



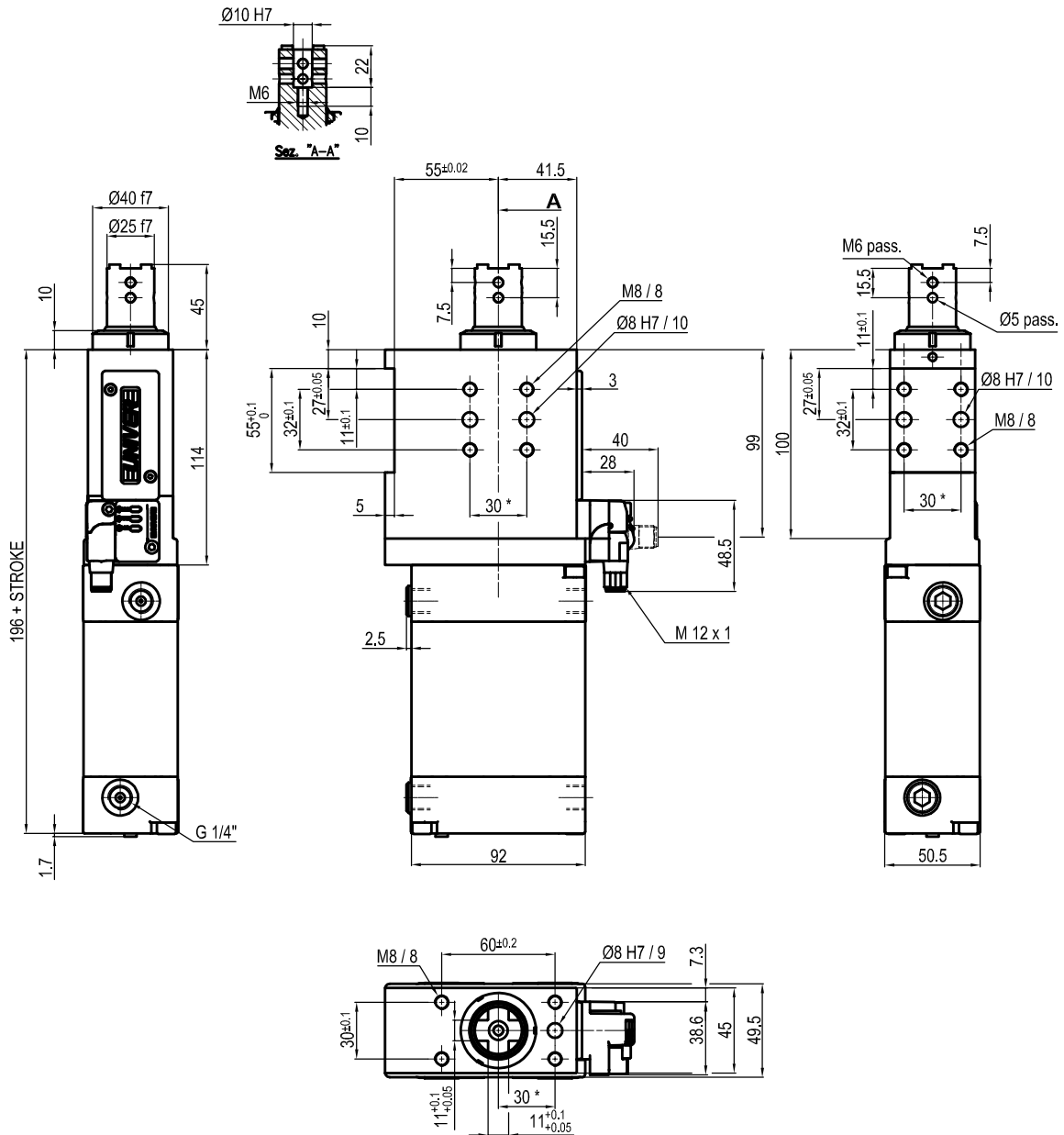
| Bore $\varnothing$ | Max. pull force<br>0.5 MPa | Max. push force<br>0.5 MPa | Max. torque           | Max. deflection moment  | Weight |
|--------------------|----------------------------|----------------------------|-----------------------|-------------------------|--------|
| 63 mm              | 860 N                      | 960 N                      | 6 Nm $\pm 0.06^\circ$ | 7.5 Nm $\pm 0.03^\circ$ | 3.4 Kg |

Min./max. operating pressure: **0,4 / 0,6 MPa**  
 Operating temperature: **5° + 45° C**  
 Strokes in mm.: **15 - 25 - 40 - 50 - 60**  
 Electronic sensor with M12 swivel connector that can be orientated at 0° or 90°  
 Supply voltage: 10+30 Vdc  
 IP code: **IP 65**  
 Pneumatic ports on both sides

\* : TOLERANCE BETWEEN DOWEL HOLES  $\pm 0.02$ , BETWEEN SCREW HOLES  $\pm 0.1$

Subject to technical modification without notice.

## UNIVERSAL Pneumatic retractable locating pin unit



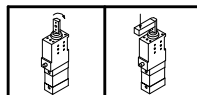
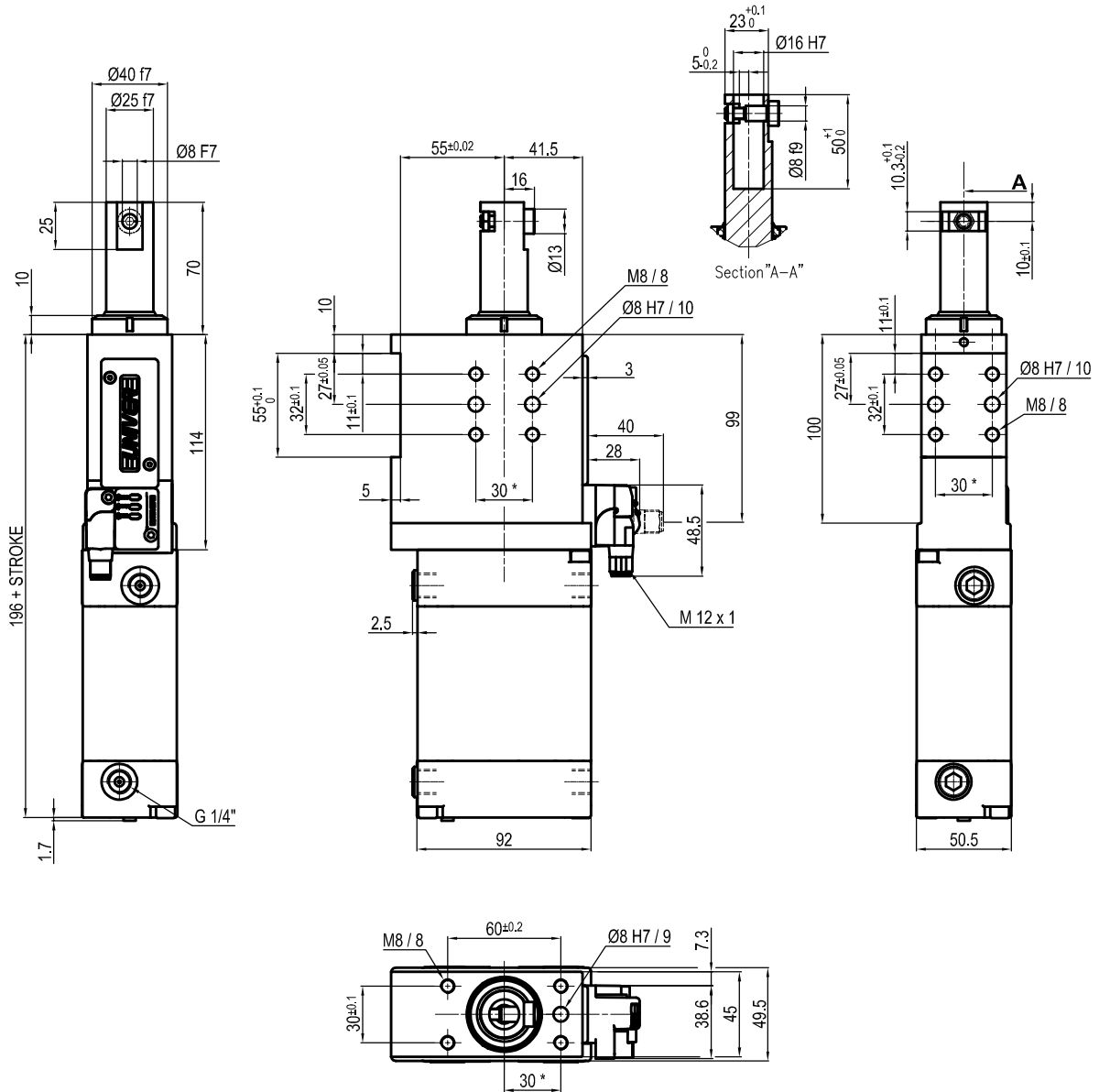
| Bore Ø | Max. pull force<br>0.5 MPa | Max. push force<br>0.5 MPa | Max. torque    | Max. deflection moment | Weight |
|--------|----------------------------|----------------------------|----------------|------------------------|--------|
| 63 mm  | 860 N                      | 960 N                      | 6 Nm<br>±0.06° | 7.5 Nm<br>±0.03°       | 3.4 Kg |

Min./max. operating pressure: **0,4 / 0,6 MPa**  
 Operating temperature: **5° + 45° C**  
 Strokes in mm.: **15 - 25 - 40 - 50 - 60**  
 Electronic sensor with M12 swivel connector that can be orientated at 0° or 90°  
 Supply voltage: 10+30 Vdc  
 IP code: **IP 65**  
 Pneumatic ports on both sides

\* : TOLERANCE BETWEEN DOWEL HOLES ± 0.02, BETWEEN SCREW HOLES ± 0.1

Subject to technical modification without notice.

## UNIVERSAL Pneumatic retractable locating pin unit



| Bore Ø | Max. pull force<br>0.5 MPa | Max. push force<br>0.5 MPa | Max. torque    | Max. deflection moment | Weight |
|--------|----------------------------|----------------------------|----------------|------------------------|--------|
| 63 mm  | 860 N                      | 960 N                      | 6 Nm<br>±0.06° | 7.5 Nm<br>±0.03°       | 3.4 Kg |

Min./max. operating pressure: **0,4 / 0,6 MPa**

Operating temperature: **5° + 45° C**

Strokes in mm.: **15 - 25 - 40 - 50 - 60**

Electronic sensor with M12 swivel connector that can be orientated at 0° or 90°

Supply voltage: 10÷30 Vdc

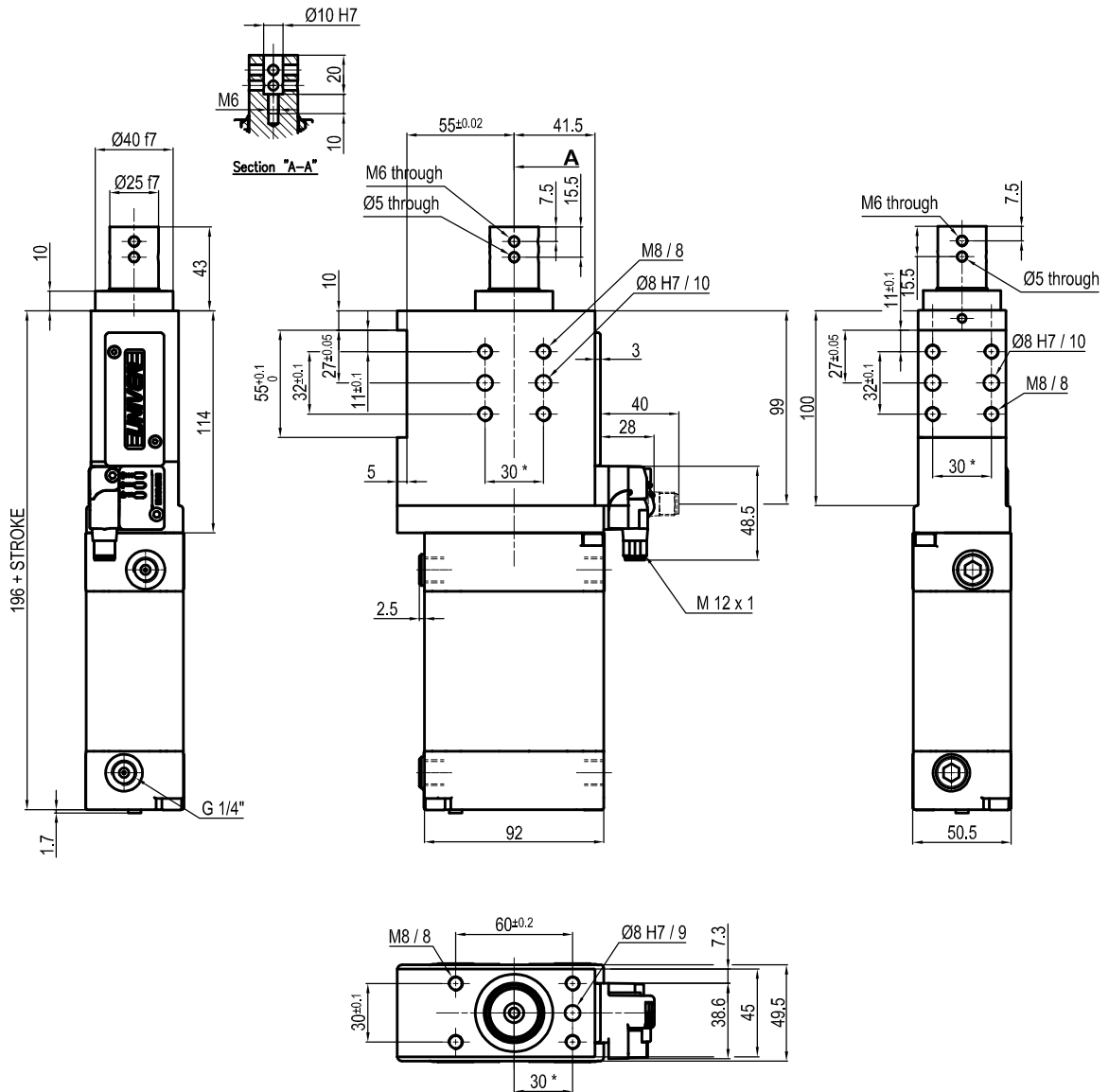
IP code: **IP 65**

Pneumatic ports on both sides

\* : TOLERANCE BETWEEN DOWEL HOLES ± 0.02, BETWEEN SCREW HOLES ± 0.1

Subject to technical modification without notice.

## UNIVERSAL Pneumatic retractable locating pin unit



| Bore Ø | Max. pull force | Max. push force | Max. torque    | Max. deflection moment | Weight |
|--------|-----------------|-----------------|----------------|------------------------|--------|
| 63 mm  | 860 N           | 960 N           | 6 Nm<br>±0.06° | 7.5 Nm<br>±0.03°       | 3.4 Kg |

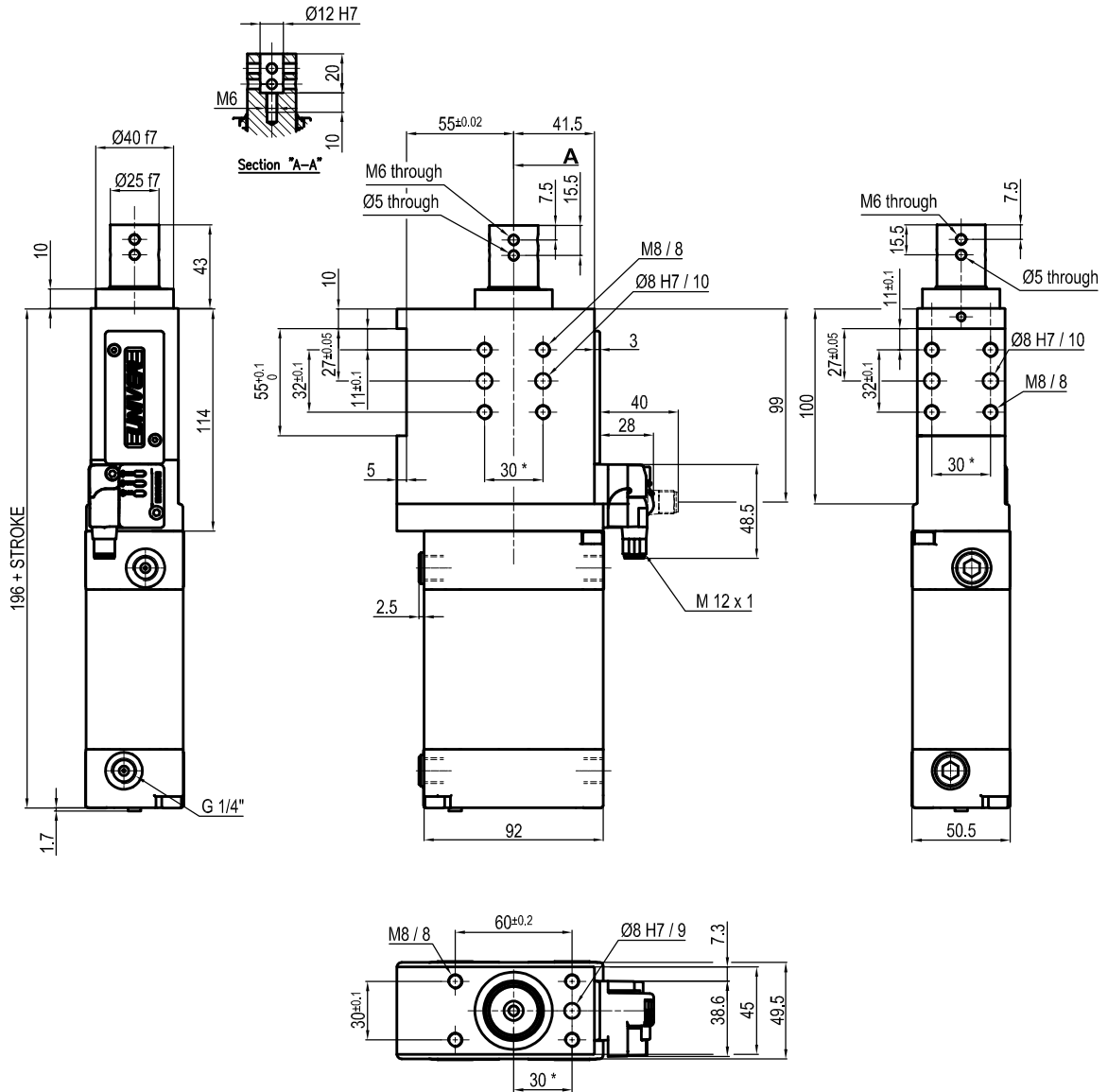
Min./max. operating pressure: **0,4 / 0,6 MPa**  
 Operating temperature: **5° + 45° C**  
 Strokes in mm.: **15 - 25 - 40 - 50 - 60**  
 Electronic sensor with M12 swivel connector that can be orientated at 0° or 90°  
 Supply voltage: 10+30 Vdc  
 IP code: **IP 65**  
 Pneumatic ports on both sides

\* : TOLERANCE BETWEEN DOWEL HOLES ± 0.02, BETWEEN SCREW HOLES ± 0.1

Subject to technical modification without notice.



## UNIVERSAL Pneumatic retractable locating pin unit



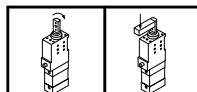
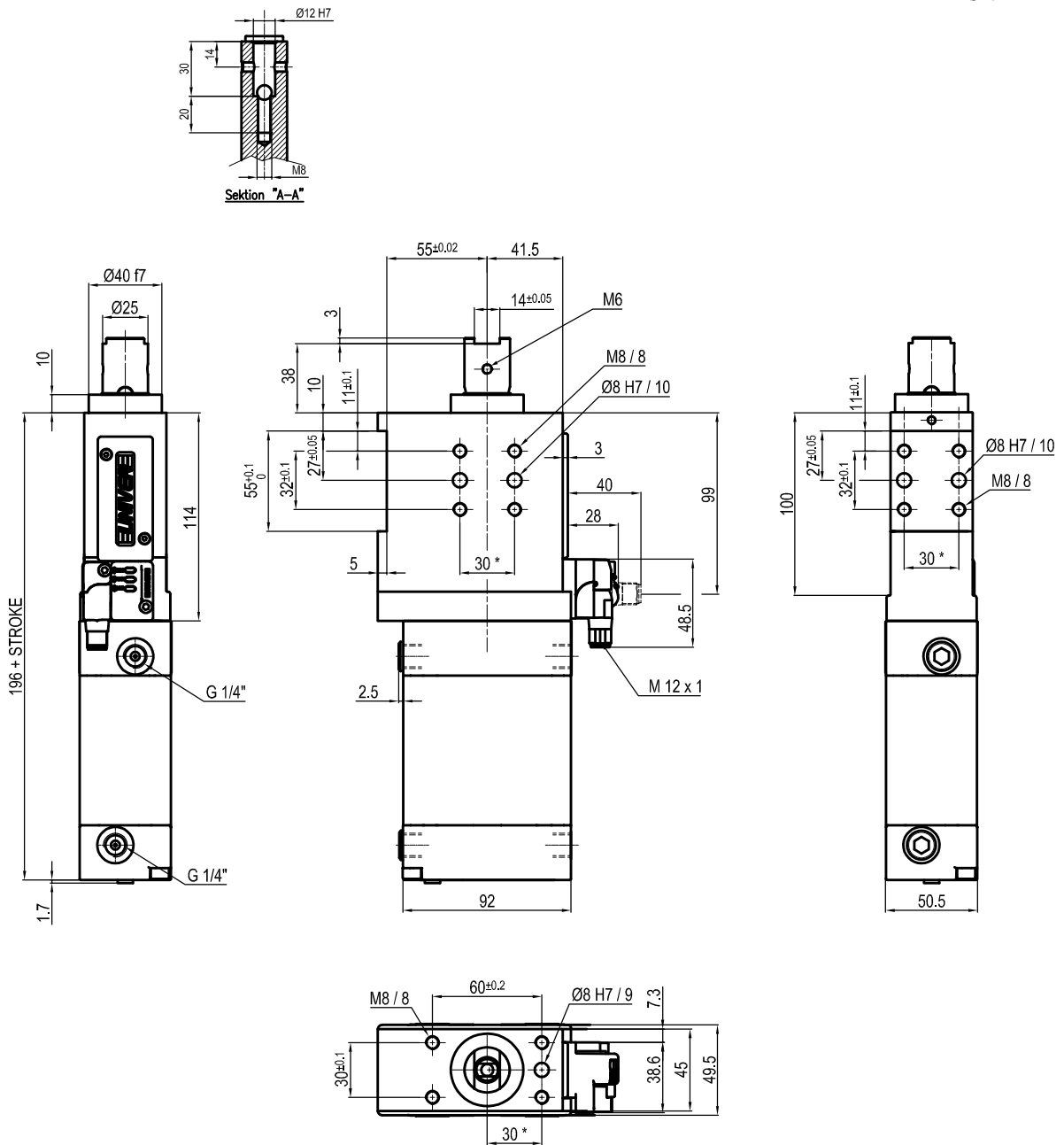
| Bore Ø | Max. pull force<br>0.5 MPa | Max. push force<br>0.5 MPa | Max. torque    | Max. deflection moment | Weight |
|--------|----------------------------|----------------------------|----------------|------------------------|--------|
| 63 mm  | 860 N                      | 960 N                      | 6 Nm<br>±0.06° | 7.5 Nm<br>±0.03°       | 3.4 Kg |

Min./max. operating pressure: **0,4 / 0,6 MPa**  
 Operating temperature: **5° + 45° C**  
 Strokes in mm.: **15 - 25 - 40 - 50 - 60**  
 Electronic sensor with M12 swivel connector that can be orientated at 0° or 90°  
 Supply voltage: 10+30 Vdc  
 IP code: **IP 65**  
 Pneumatic ports on both sides

\* : TOLERANCE BETWEEN DOWEL HOLES ± 0.02, BETWEEN SCREW HOLES ± 0.1

Subject to technical modification without notice.

## UNIVERSAL Pneumatic retractable locating pin unit



| Bore Ø | Max. pull force<br>0.5 MPa | Max. push force<br>0.5 MPa | Max. torque    | Max. deflection moment | Weight |
|--------|----------------------------|----------------------------|----------------|------------------------|--------|
| 63 mm  | 860 N                      | 960 N                      | 6 Nm<br>±0.06° | 7.5 Nm<br>±0.03°       | 3.4 Kg |

Min./max. operating pressure: **0,4 / 0,6 MPa**

Operating temperature: **5° + 45° C**

Strokes in mm.: **25 - 50**

Electronic sensor with M12 swivel connector that can be orientated at 0° or 90°

Supply voltage: **10+30 Vdc**

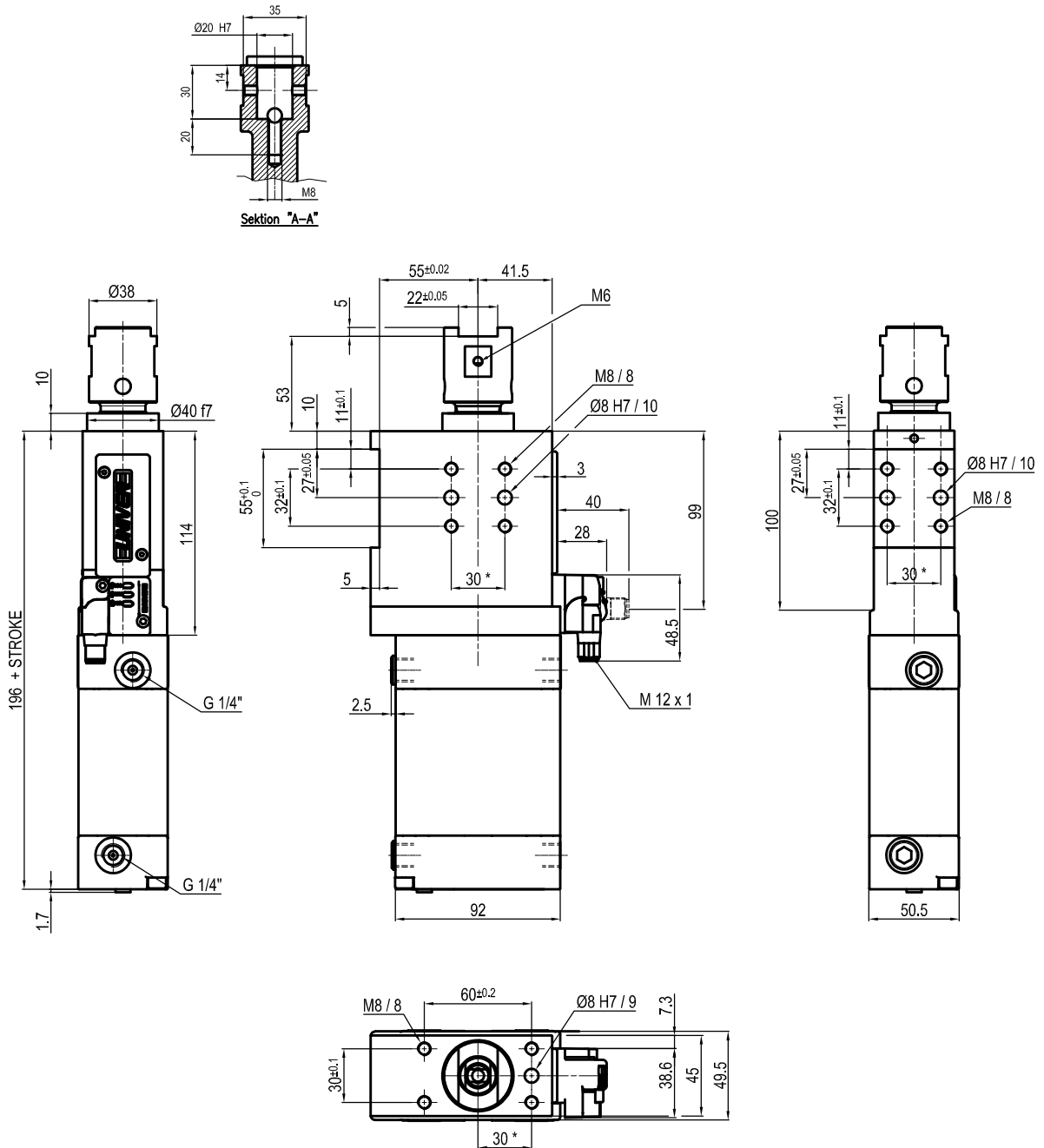
IP code: **IP 65**

Pneumatic ports on both sides

\* : TOLERANCE BETWEEN DOWEL HOLES ± 0.02, BETWEEN SCREW HOLES ± 0.1

Subject to technical modification without notice.

## UNIVERSAL Pneumatic retractable locating pin unit



| Bore Ø | Max. pull force<br>0.5 MPa | Max. push force<br>0.5 MPa | Max. torque    | Max. deflection moment | Weight |
|--------|----------------------------|----------------------------|----------------|------------------------|--------|
| 63 mm  | 860 N                      | 960 N                      | 6 Nm<br>±0.06° | 7.5 Nm<br>±0.03°       | 3.4 Kg |

Min./max. operating pressure: **0,4 / 0,6 MPa**  
 Operating temperature: **5° + 45° C**  
 Strokes in mm.: **25 - 50**  
 Electronic sensor with M12 swivel connector that can be orientated at 0° or 90°  
 Supply voltage: 10+30 Vdc  
 IP code: **IP 65**  
 Pneumatic ports on both sides

\* : TOLERANCE BETWEEN DOWEL HOLES ± 0.02, BETWEEN SCREW HOLES ± 0.1

Subject to technical modification without notice.

# LCP63

Pneumatic retractable locating pin unit, single rod



|   |   |   |   |   |   |   |   |   |   |   |   |
|---|---|---|---|---|---|---|---|---|---|---|---|
| L | C | P | 6 | 3 | 0 | 5 | 0 | E | A | E | R |
| 1 | 2 | 3 | 4 |   | 5 | 6 | 7 | 8 |   |   |   |

|                 |                  |               |
|-----------------|------------------|---------------|
| <b>1 Series</b> | <b>2 Version</b> | <b>3 Size</b> |
|-----------------|------------------|---------------|

LC = Retractable locating pin unit

P = Pneumatic-standard, single rod

63 = Ø 63 mm

|                  |                        |                        |
|------------------|------------------------|------------------------|
| <b>4 Strokes</b> | <b>5 Sensing style</b> | <b>6 Rod end style</b> |
|------------------|------------------------|------------------------|

- 015 = 15 mm
- 025 = 25 mm
- 040 = 40 mm
- 050 = 50 mm
- 060 = 60 mm

- N = No sensor (with protection plate)
- E = Electronic sensor with M12 swivel connector

- A = Rod for off-set pins
- B = Rod with profiled end
- C = Rod with cross-profiled end inner Ø 16 mm
- D = Rod for off-set pins with oversized dowel holes
- E = Rod with cross-profiled end inner Ø 10 mm
- F = Rod for side mounting
- H = Rod with flat end, inner Ø 10 mm
- I = Rod with flat end, inner Ø 12 mm
- L = Rod with 12 mm hole compatible with CNOMO LCG
- M = Rod with 20 mm hole compatible with CNOMO LCG

|                          |                      |
|--------------------------|----------------------|
| <b>7 Rod orientation</b> | <b>8 Rod scraper</b> |
|--------------------------|----------------------|

E = East, standard



R = Metallic rod scraper

O = West



N = North

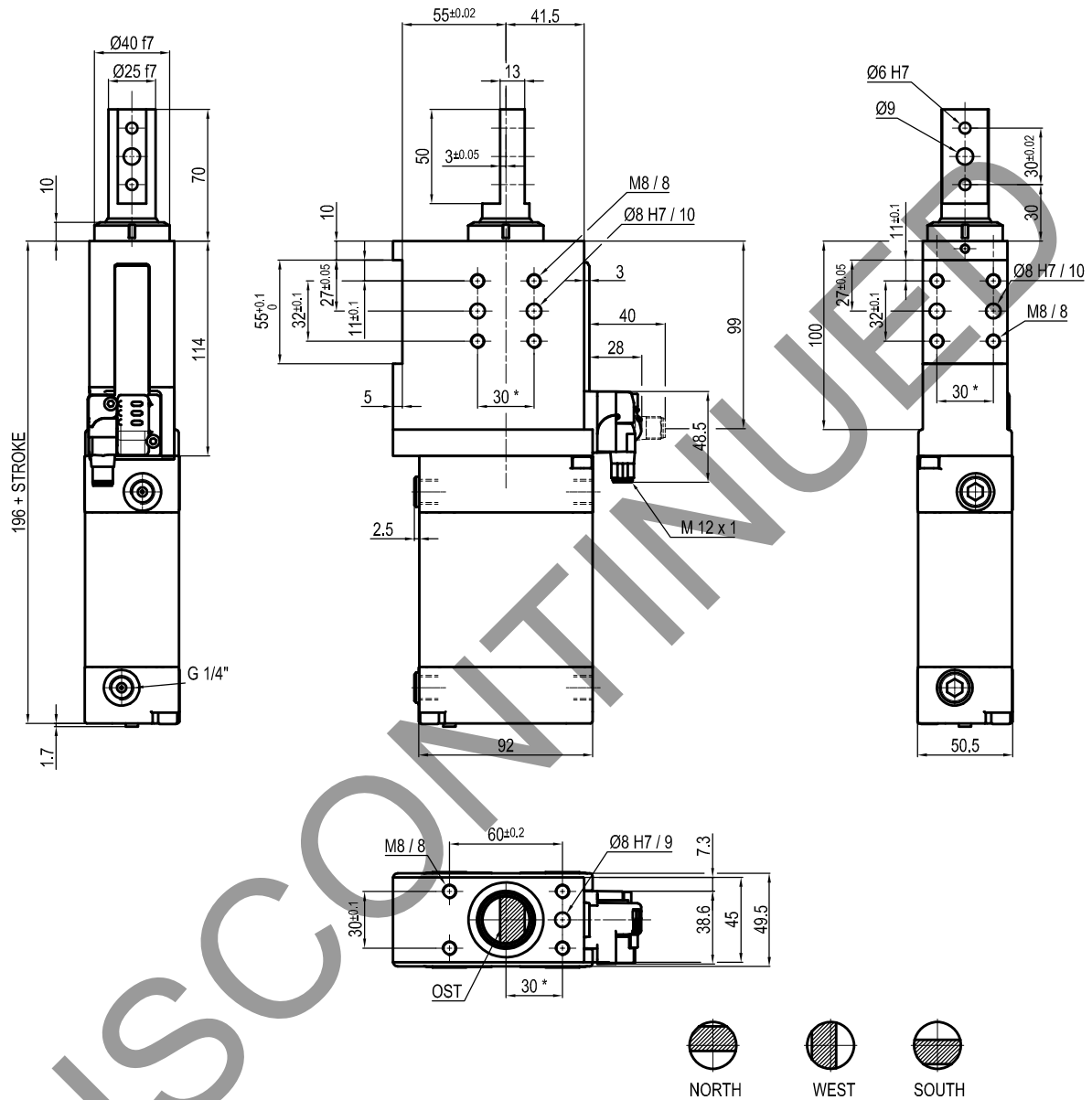


S = South



Only with A and D rod end styles

## UNIVERSAL Pneumatic retractable locating pin unit



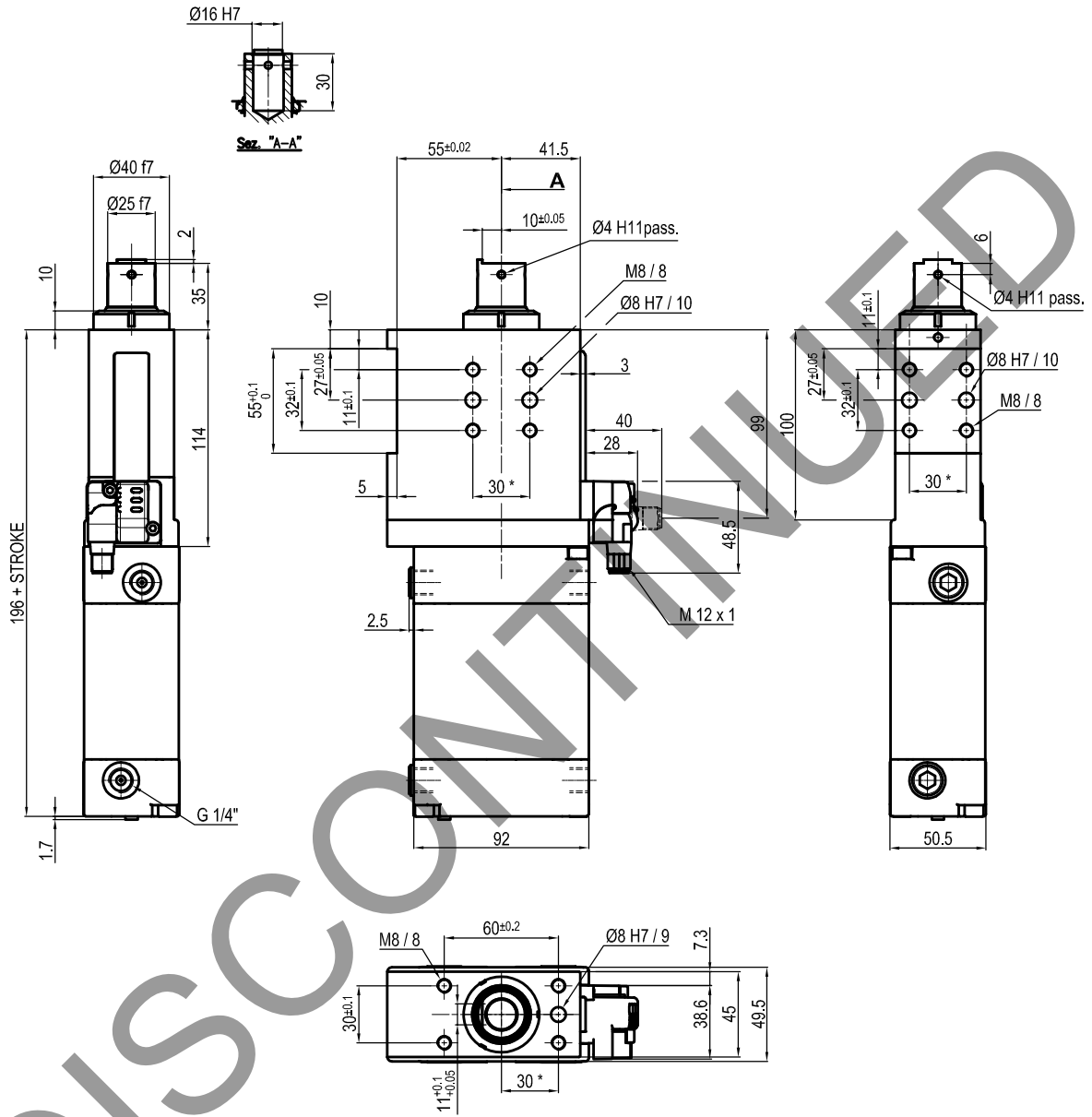
| Bore Ø | Max. torque    | Max. deflection moment | Weight |
|--------|----------------|------------------------|--------|
| 63 mm  | 6 Nm<br>±0.06° | 7.5 Nm<br>±0.03°       | 3.4 Kg |

Min./max. operating pressure: **0,4 / 0,6 MPa**  
 Operating temperature: **5° ± 45° C**  
 Strokes in mm.: **15 - 25 - 40 - 50 - 60**  
 Electronic sensor with M12 swivel connector that can be orientated at 0° or 90°  
 Supply voltage: 10\*30 Vdc  
 IP code: **IP 65**  
 Pneumatic ports on both sides

\* : TOLERANCE BETWEEN DOWEL HOLES ± 0.02, TO SCREW HOLES ± 0.1

Subject to technical modification without notice.

## UNIVERSAL Pneumatic retractable locating pin unit



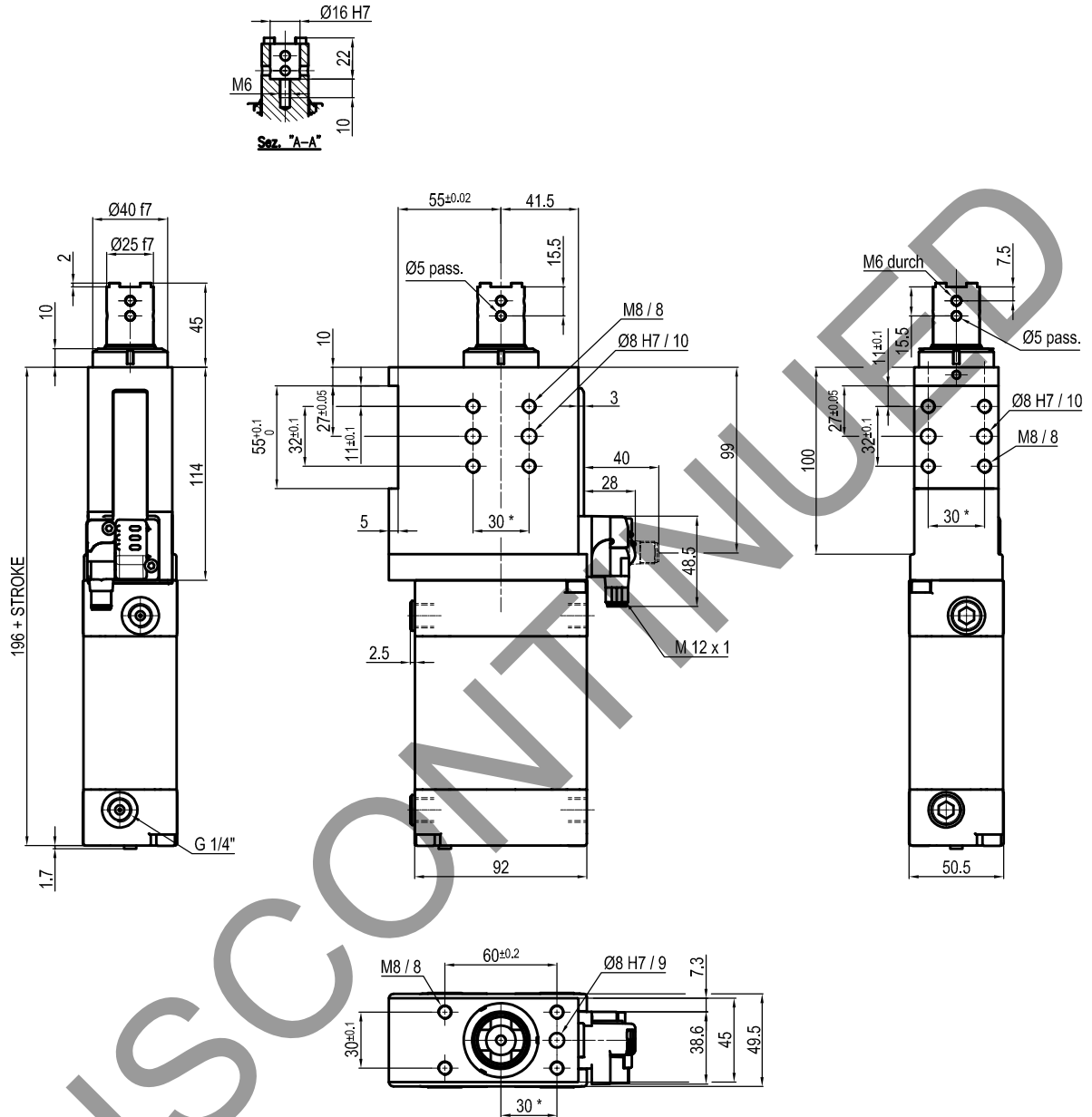
| Bore $\varnothing$ | Max. torque              | Max. deflection moment     | Weight |
|--------------------|--------------------------|----------------------------|--------|
| 63 mm              | 6 Nm<br>$\pm 0.06^\circ$ | 7.5 Nm<br>$\pm 0.03^\circ$ | 3.4 Kg |

Min./max. operating pressure: **0,4 / 0,6 MPa**  
 Operating temperature: **5° ± 45° C**  
 Strokes in mm.: **15 - 25 - 40 - 50 - 60**  
 Electronic sensor with M12 swivel connector that can be orientated at 0° or 90°  
 Supply voltage: 10+30 Vdc  
 IP code: **IP 65**  
 Pneumatic ports on both sides

\* : TOLERANCE BETWEEN DOWEL HOLES  $\pm 0.02$ , TO SCREW HOLES  $\pm 0.1$

Subject to technical modification without notice.

## UNIVERSAL Pneumatic retractable locating pin unit



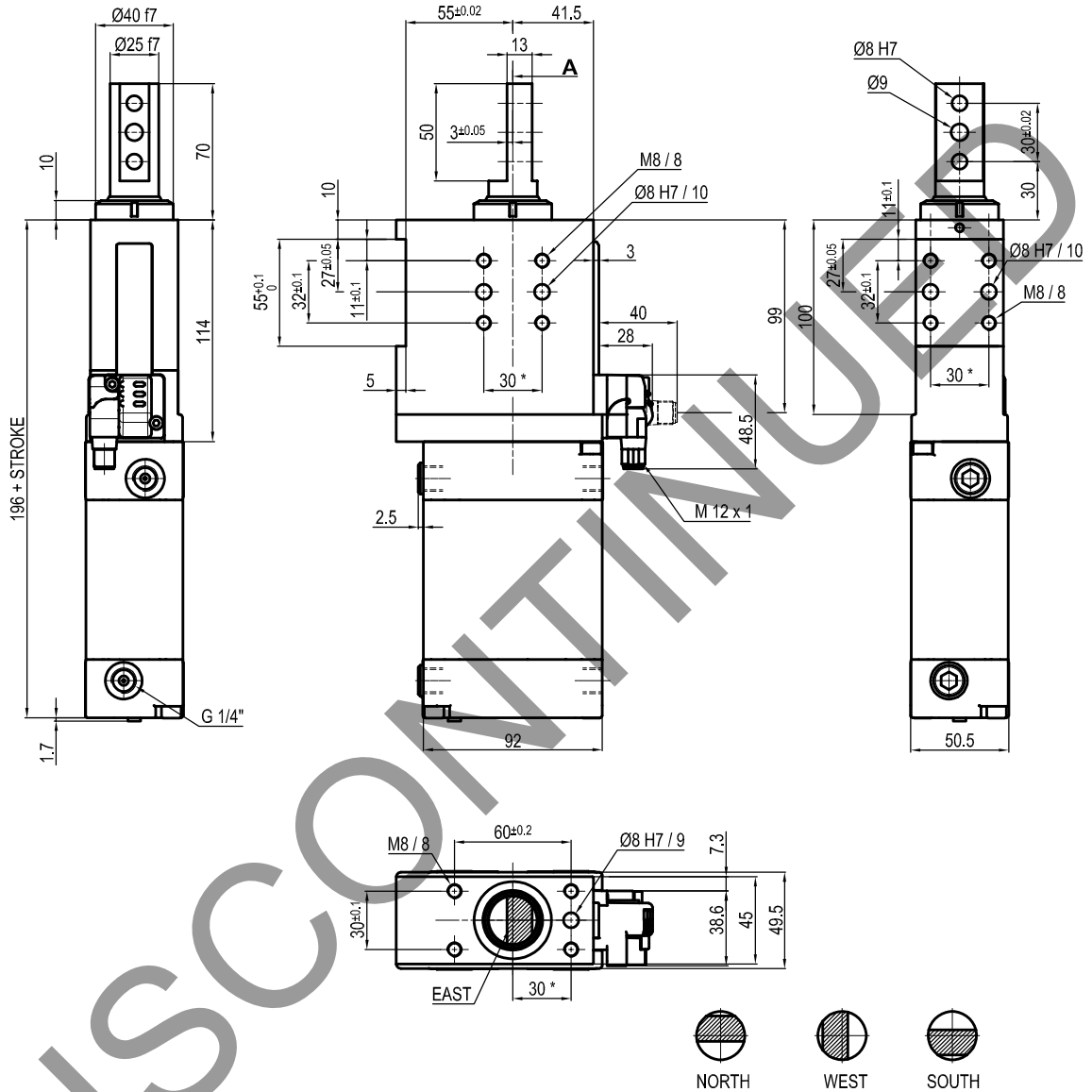
| Bore Ø | Max. torque    | Max. deflection moment | Weight |
|--------|----------------|------------------------|--------|
| 63 mm  | 6 Nm<br>±0.06° | 7.5 Nm<br>±0.03°       | 3.4 Kg |

Min./max. operating pressure: **0,4 / 0,6 MPa**  
 Operating temperature: **5° ± 45° C**  
 Strokes in mm.: **15 - 25 - 40 - 50 - 60**  
 Electronic sensor with M12 swivel connector that can be orientated at 0° or 90°  
 Supply voltage: 10±30 Vdc  
 IP code: **IP 65**  
 Pneumatic ports on both sides

\* : TOLERANCE BETWEEN DOWEL HOLES ± 0.02, TO SCREW HOLES ± 0.1

Subject to technical modification without notice.

## UNIVERSAL Pneumatic retractable locating pin unit



DISCOMET

| Bore Ø | Max. torque    | Max. deflection moment | Weight |
|--------|----------------|------------------------|--------|
| 63 mm  | 6 Nm<br>±0.06° | 7.5 Nm<br>±0.03°       | 3.4 Kg |

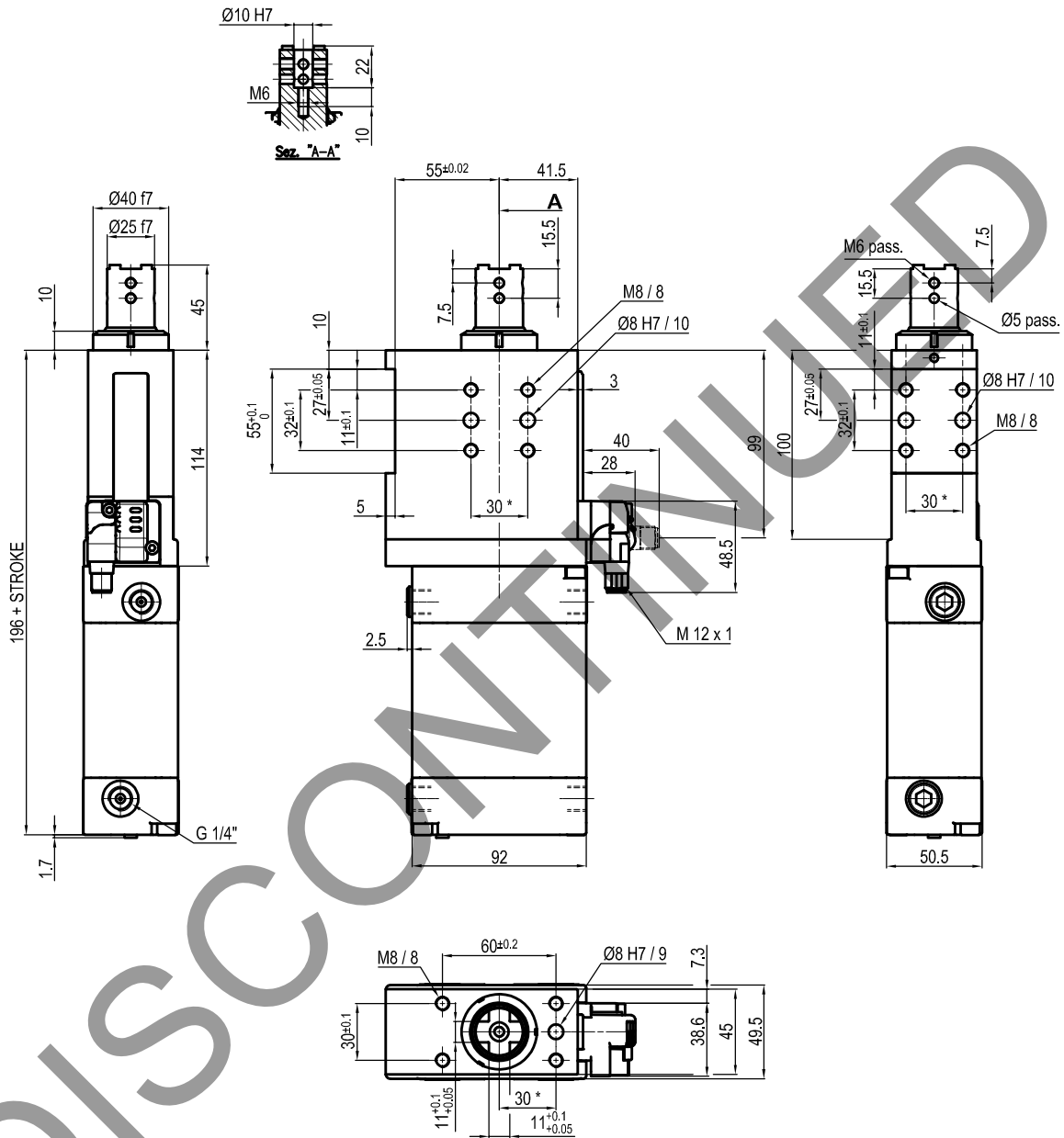
Min./max. operating pressure: **0,4 / 0,6 MPa**  
 Operating temperature: **5° ± 45° C**  
 Strokes in mm.: **15 - 25 - 40 - 50 - 60**  
 Electronic sensor with M12 swivel connector that can be orientated at 0° or 90°  
 Supply voltage: 10±30 Vdc  
 IP code: **IP 65**  
 Pneumatic ports on both sides

\* : TOLERANCE BETWEEN DOWEL HOLES ± 0.02, TO SCREW HOLES ± 0.1

Subject to technical modification without notice.



## UNIVERSAL Pneumatic retractable locating pin unit



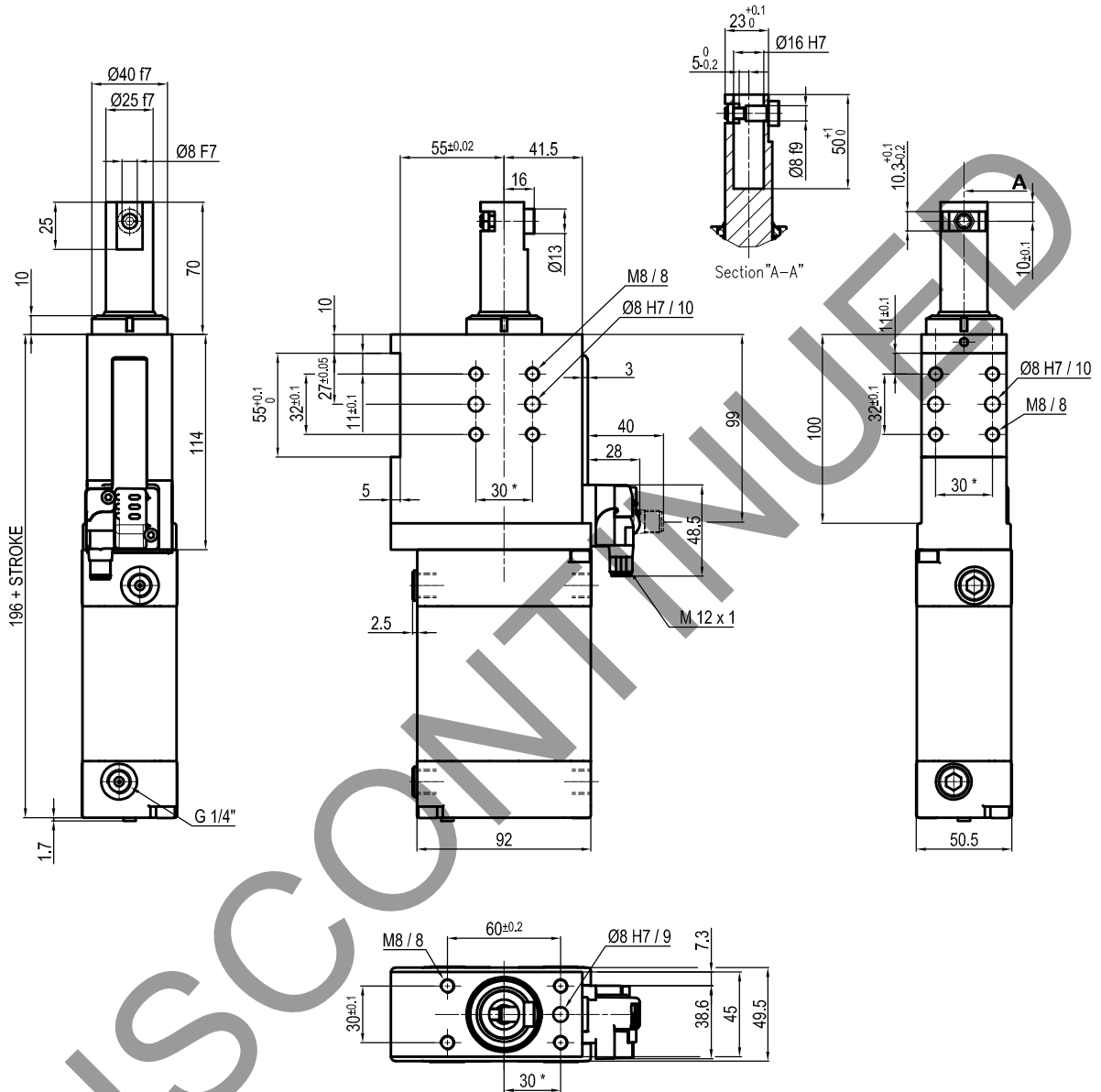
| Bore Ø | Max. torque    | Max. deflection moment | Weight |
|--------|----------------|------------------------|--------|
| 63 mm  | 6 Nm<br>±0.06° | 7.5 Nm<br>±0.03°       | 3.4 Kg |

Min./max. operating pressure: **0,4 / 0,6 MPa**  
 Operating temperature: **5° ± 45° C**  
 Strokes in mm.: **15 - 25 - 40 - 50 - 60**  
 Electronic sensor with M12 swivel connector that can be orientated at 0° or 90°  
 Supply voltage: 10+30 Vdc  
 IP code: **IP 65**  
 Pneumatic ports on both sides

\* : TOLERANCE BETWEEN DOWEL HOLES ± 0.02, TO SCREW HOLES ± 0.1

Subject to technical modification without notice.

## UNIVERSAL Pneumatic retractable locating pin unit



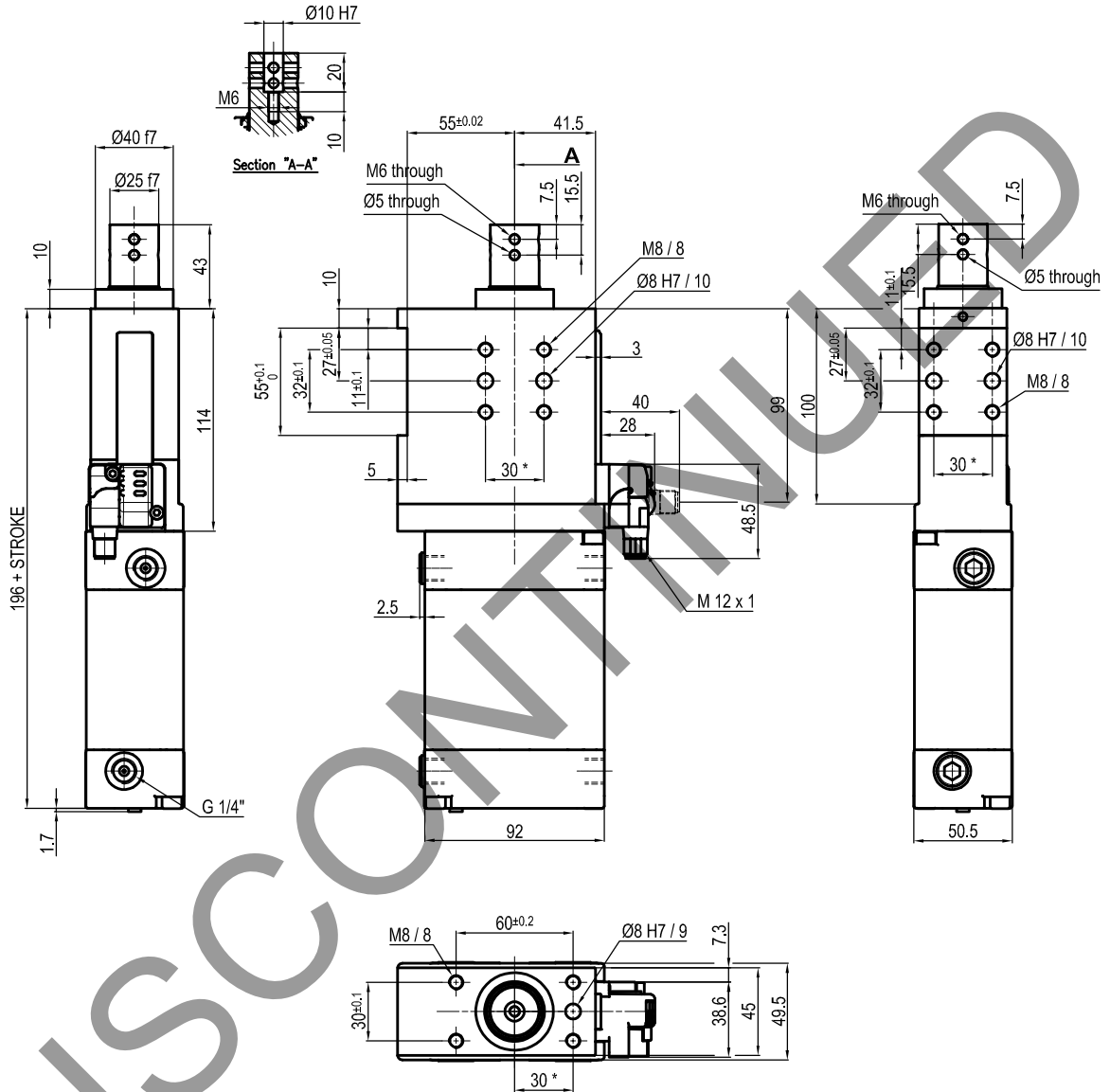
| Bore Ø | Max. torque    | Max. deflection moment | Weight |
|--------|----------------|------------------------|--------|
| 63 mm  | 6 Nm<br>±0.06° | 7.5 Nm<br>±0.03°       | 3.4 Kg |

Min./max. operating pressure: **0,4 / 0,6 MPa**  
 Operating temperature: **5° ± 45° C**  
 Strokes in mm.: **15 - 25 - 40 - 50 - 60**  
 Electronic sensor with M12 swivel connector that can be orientated at 0° or 90°  
 Supply voltage: 10\*30 Vdc  
 IP code: **IP 65**  
 Pneumatic ports on both sides

\* : TOLERANCE BETWEEN DOWEL HOLES ± 0.02, TO SCREW HOLES ± 0.1

Subject to technical modification without notice.

## UNIVERSAL Pneumatic retractable locating pin unit



DISCOM

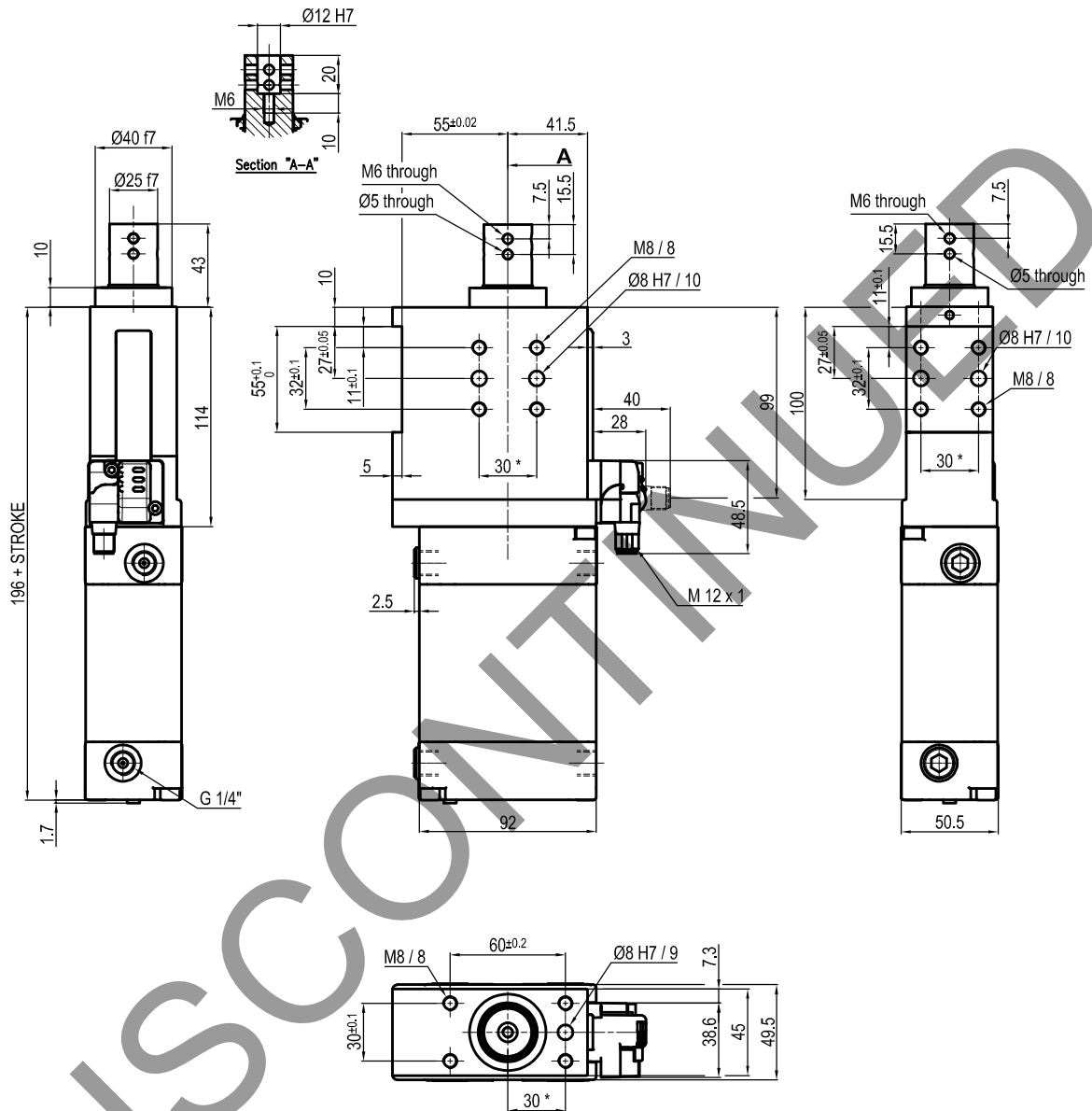
| Bore Ø | Max. torque    | Max. deflection moment | Weight |
|--------|----------------|------------------------|--------|
| 63 mm  | 6 Nm<br>±0.06° | 7.5 Nm<br>±0.03°       | 3.4 Kg |

Min./max. operating pressure: **0,4 / 0,6 MPa**  
 Operating temperature: **5° ± 45° C**  
 Strokes in mm.: **15 - 25 - 40 - 50 - 60**  
 Electronic sensor with M12 swivel connector that can be orientated at 0° or 90°  
 Supply voltage: 10\*30 Vdc  
 IP code: **IP 65**  
 Pneumatic ports on both sides

\* : TOLERANCE BETWEEN DOWEL HOLES ± 0.02, TO SCREW HOLES ± 0.1

Subject to technical modification without notice.

## UNIVERSAL Pneumatic retractable locating pin unit



DISCOVER

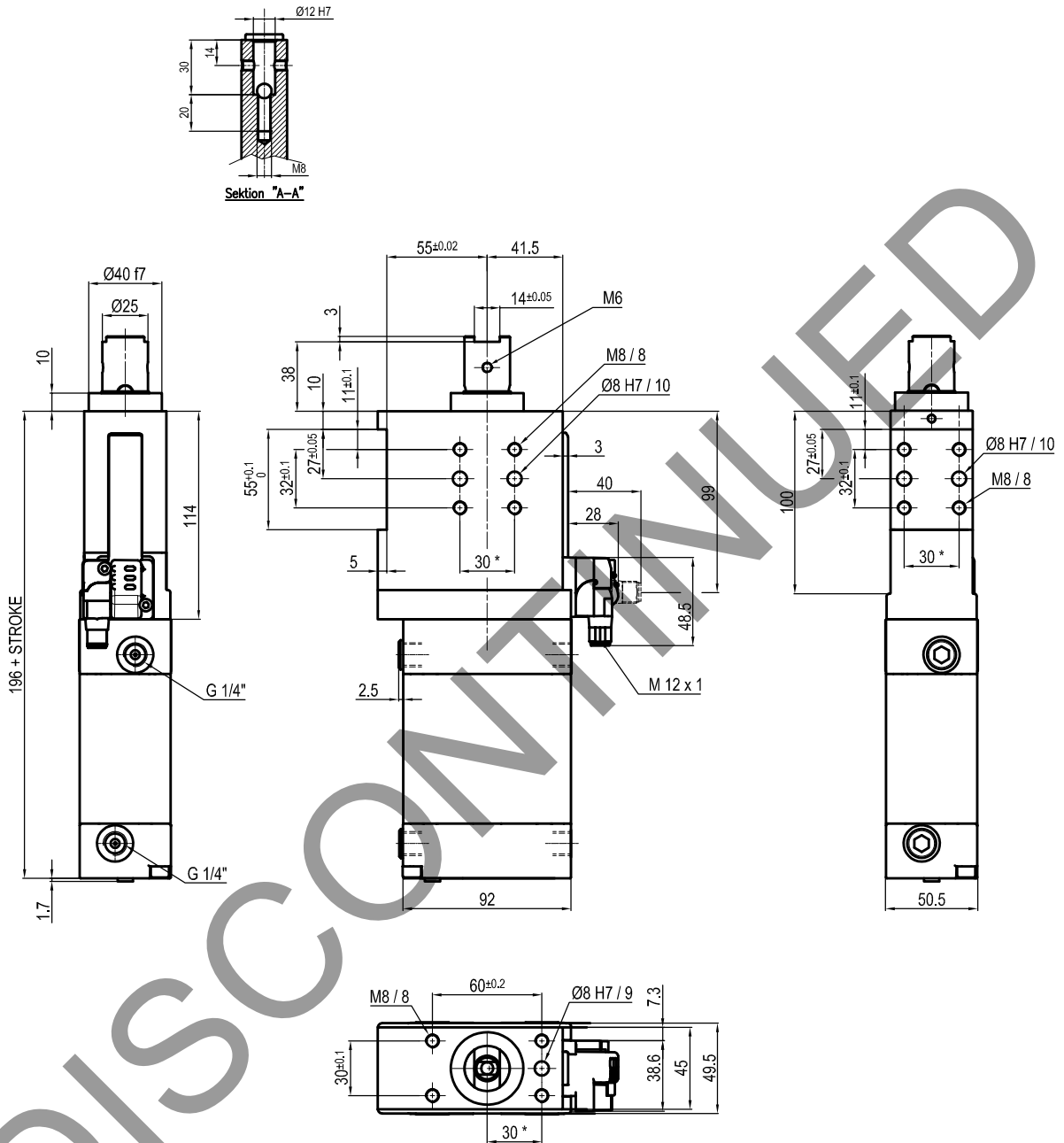
| Bore Ø | Max. torque    | Max. deflection moment | Weight |
|--------|----------------|------------------------|--------|
| 63 mm  | 6 Nm<br>±0.06° | 7.5 Nm<br>±0.03°       | 3.4 Kg |

Min./max. operating pressure: **0,4 / 0,6 MPa**  
 Operating temperature: **5° ± 45° C**  
 Strokes in mm.: **15 - 25 - 40 - 50 - 60**  
 Electronic sensor with M12 swivel connector that can be orientated at 0° or 90°  
 Supply voltage: 10+30 Vdc  
 IP code: **IP 65**  
 Pneumatic ports on both sides

\* : TOLERANCE BETWEEN DOWEL HOLES ± 0.02, TO SCREW HOLES ± 0.1

Subject to technical modification without notice.

## UNIVERSAL Pneumatic retractable locating pin unit



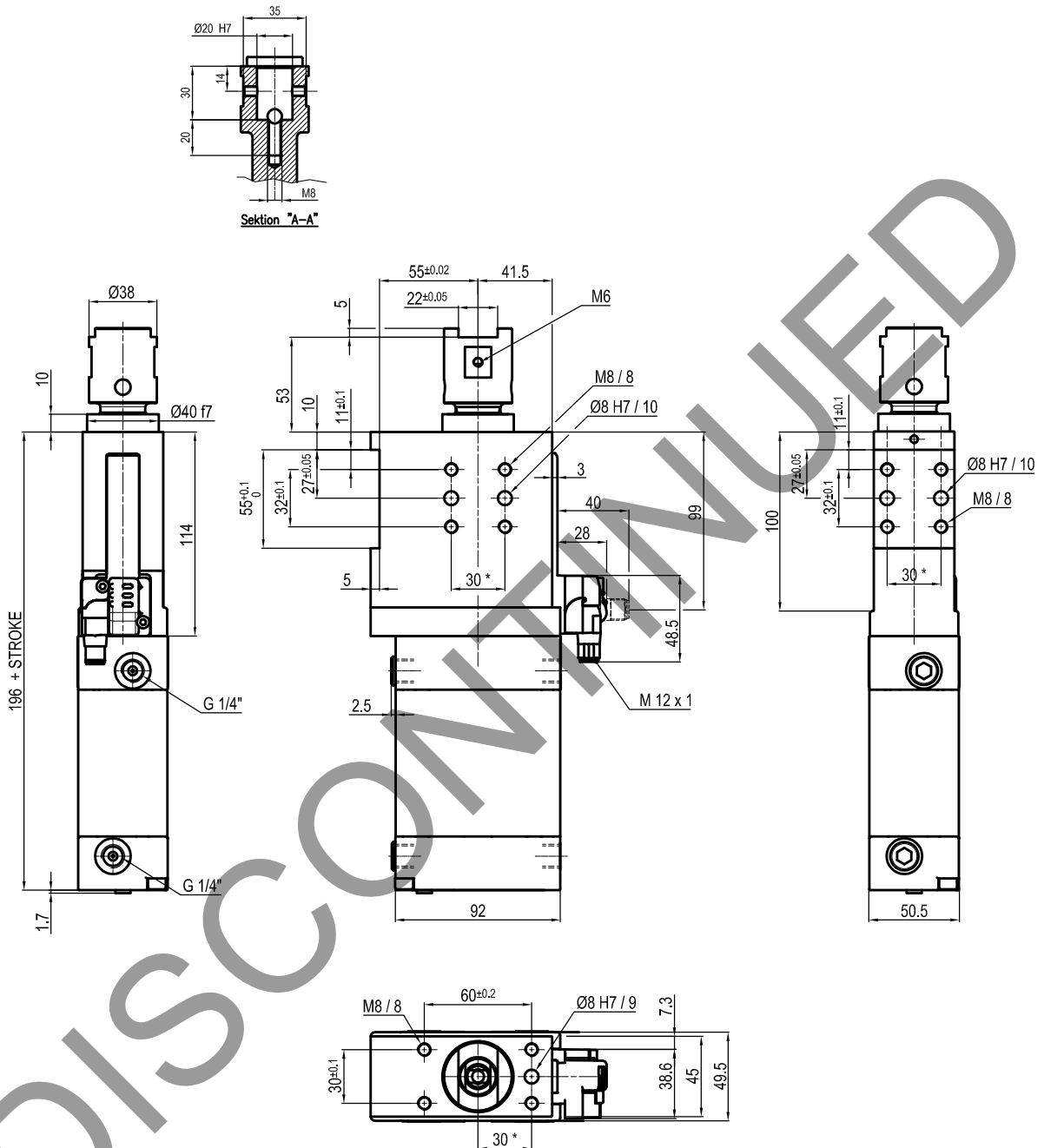
| Bore Ø | Max. torque    | Max. deflection moment | Weight |
|--------|----------------|------------------------|--------|
| 63 mm  | 6 Nm<br>±0.06° | 7.5 Nm<br>±0.03°       | 3.4 Kg |

Min./max. operating pressure: **0,4 / 0,6 MPa**  
 Operating temperature: **5° ± 45° C**  
 Strokes in mm.: **25 - 50**  
 Electronic sensor with M12 swivel connector that can be orientated at 0° or 90°  
 Supply voltage: **10±30 Vdc**  
 IP code: **IP 65**  
 Pneumatic ports on both sides

\* : TOLERANCE BETWEEN DOWEL HOLES ± 0.02, TO SCREW HOLES ± 0.1

Subject to technical modification without notice.

## UNIVERSAL Pneumatic retractable locating pin unit



DISCOMPLETED

| Bore Ø | Max. torque    | Max. deflection moment | Weight |
|--------|----------------|------------------------|--------|
| 63 mm  | 6 Nm<br>±0.06° | 7.5 Nm<br>±0.03°       | 3.4 Kg |

Min./max. operating pressure: **0,4 / 0,6 MPa**  
 Operating temperature: **5° ± 45° C**  
 Strokes in mm.: **25 - 50**  
 Electronic sensor with M12 swivel connector that can be orientated at 0° or 90°  
 Supply voltage: **10±30 Vdc**  
 IP code: **IP 65**  
 Pneumatic ports on both sides

\* : TOLERANCE BETWEEN DOWEL HOLES ± 0.02, TO SCREW HOLES ± 0.1

Subject to technical modification without notice.